

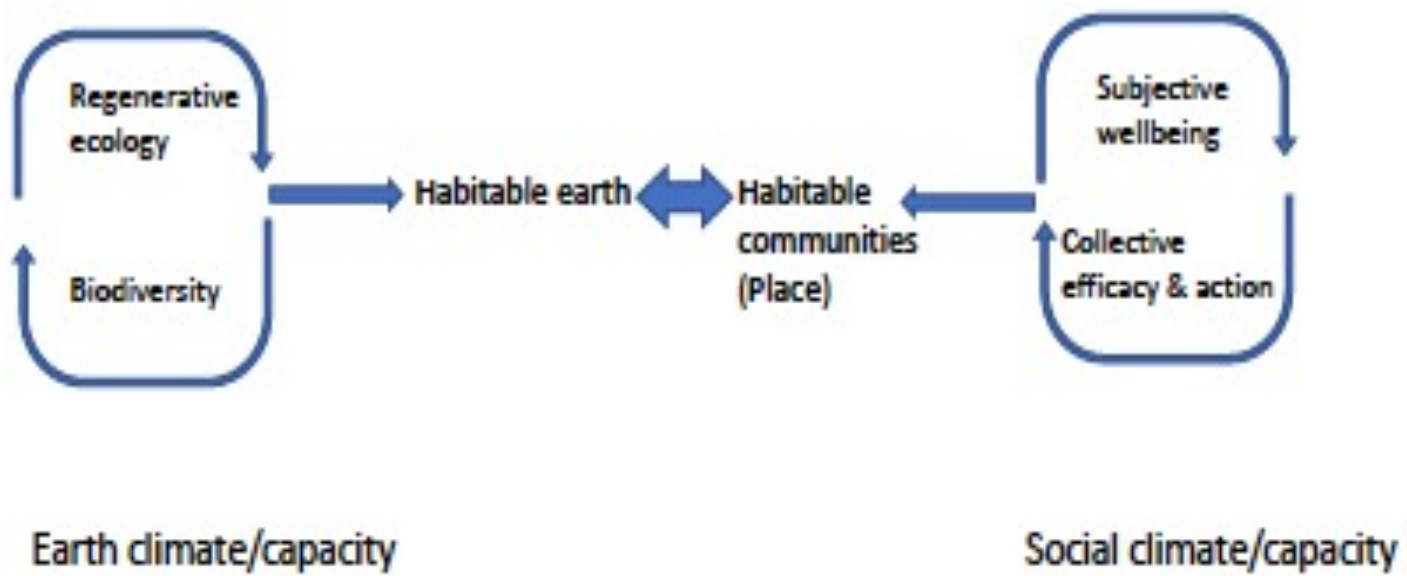
The social crisis of the climate crisis

Gary Belkin

g@abillion.org

Glasgow Centre for Population Health

November 10, 2021



Annual Review of Sociology

Climate Change and Society

Annu. Rev. Sociol. 2020. 46:135–58

Thomas Dietz,^{1,*} Rachael L. Shwom,^{2,*}
and Cameron T. Whitley^{3,*}



Available online at www.sciencedirect.com

ScienceDirect

Active citizenship for urban green infrastructure: fostering the diversity and dynamics of citizen contributions through mosaic governance

Arjen E Buijs^{1,2}, Thomas JM Mattijssen¹,
Alexander PN Van der Jagt³, Bianca Ambrose-Oji⁴,
Erik Andersson⁶, Birgit HM Elands¹ and Maja Steen Møller⁵



POLICY FORUM

Planned relocation: Pluralistic and integrated science and governance

Knowledge for just and effective planned relocation will emerge from entangled action, learning, and capacity building

By R. H. Moss^{1,2}, P. M. Reed³,
A. Hadjimichael¹, J. Rozenberg⁴

need to evolve to make planned relocation a strategic option that leaves people, communities, and the environment better off. The

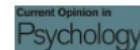


ELSEVIER

Review

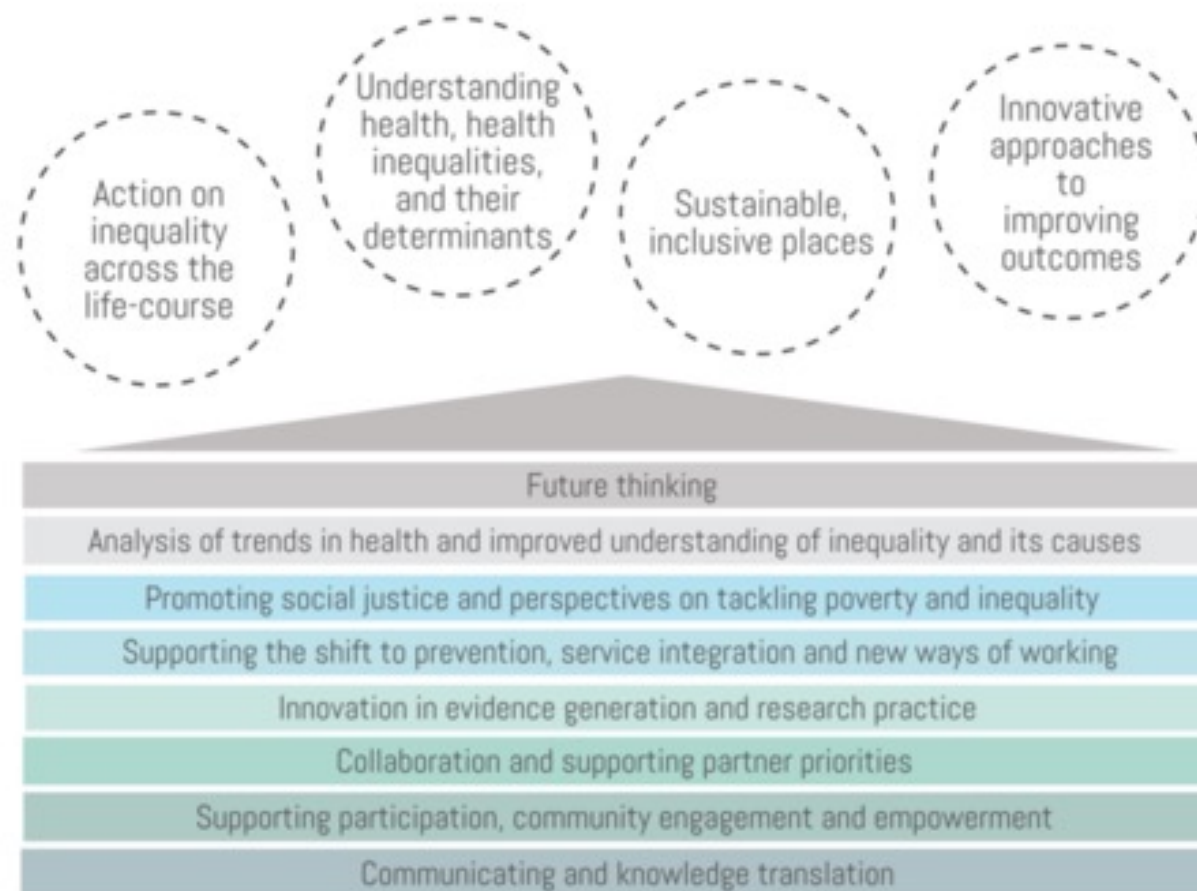
Available online at www.sciencedirect.com

ScienceDirect

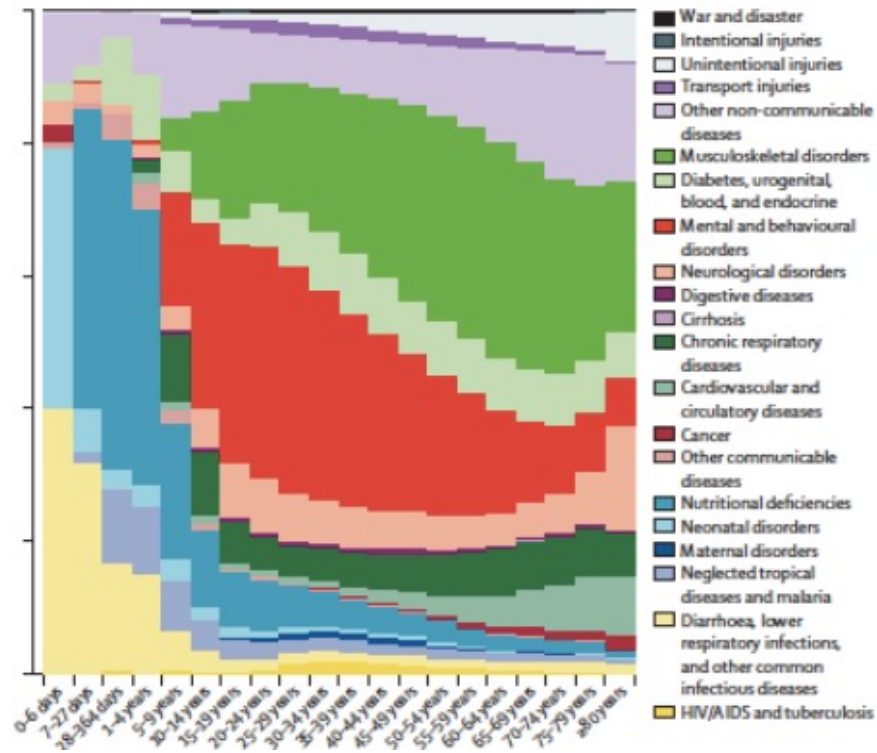


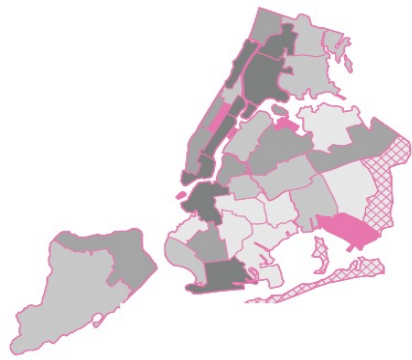
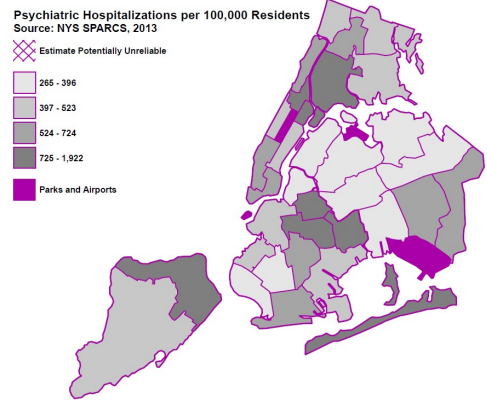
Collective climate action: When do people turn into collective environmental agents?

Immo Fritsche and Torsten Masson



Population Mental Health?





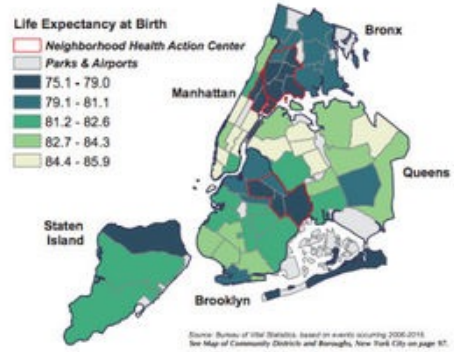
Lifetime Depression

Source: NYC Community Health Survey, 2013

- 5.7% — 11.3%
- 11.4% — 14.5%
- 14.6% — 17.9%
- 18.0% — 22.1%
- Estimate Potentially Unreliable
- Parks and Airports

LIFE EXPECTANCY

Figure 4. Life Expectancy at Birth by Community District, New York City, 2006-2015



Open Forum

Scaling Up for the “Bottom Billion”: “5×5” Implementation of Community Mental Health Care in Low-Income Regions

Gary S. Belkin, M.D., Ph.D.
Jürgen Unützer, M.D., M.P.H.
Ronald C. Kessler, Ph.D.
Helen Verdell, Ph.D., M.Sc.
Giuseppe J. Raviola, M.D.
Katherine Sachs, B.A.
Catherine Oswald, M.P.H.
Eddy Eustache, M.A.

Skill Packages for Mental Health Pathways – Mapping skill areas to roles

	Community leaders	Community health workers	Social workers’ assistants	Social workers	Psychologists	Nurses – Health Center level	Nurses – District Hospital level	General physicians	Specialist clinicians
MH in context of stigma, culture, religion MH and human rights	Red	Red	Red	Red	Red	Red	Red	Red	Red
Familiarity with MH care pathways	Blue	Blue	Blue	Blue	Blue	Blue	Blue	Blue	Blue
Familiarity with main symptom groups and major disorders	Blue	Blue	Blue	Blue	Blue	Blue	Blue	Blue	Blue
Screening tool	Blue	Blue	Blue	Blue	Blue	Blue	Blue	Blue	Blue
Mental status exam	Blue	Blue	Blue	Blue	Blue	Blue	Blue	Blue	Blue
Triage of priority mental disorders	Blue	Blue	Blue	Blue	Blue	Blue	Blue	Blue	Blue
Rationale for accepted treatment approaches	Green	Green	Green	Green	Green	Green	Green	Green	Green
Active and empathic listening skills	Green	Green	Green	Green	Green	Green	Green	Green	Green
Behavioral activation	Green	Green	Green	Green	Green	Green	Green	Green	Green
Relaxation techniques	Green	Green	Green	Green	Green	Green	Green	Green	Green
Manualized psychotherapies (i.e., IPT)	Green	Green	Green	Green	Green	Green	Green	Green	Green
TOT – psychotherapies	Green	Green	Green	Green	Green	Green	Green	Green	Green
Recognition of side effects of medication	Yellow	Yellow	Yellow	Yellow	Yellow	Yellow	Yellow	Yellow	Yellow
Medication adherence support	Yellow	Yellow	Yellow	Yellow	Yellow	Yellow	Yellow	Yellow	Yellow
Main medication types, side effects	Yellow	Yellow	Yellow	Yellow	Yellow	Yellow	Yellow	Yellow	Yellow
Medical management of priority mental disorders	Yellow	Yellow	Yellow	Yellow	Yellow	Yellow	Yellow	Yellow	Yellow
Responding to MH crises	Orange	Orange	Orange	Orange	Orange	Orange	Orange	Orange	Orange
Managing MH crises + physical restraint	Orange	Orange	Orange	Orange	Orange	Orange	Orange	Orange	Orange
Familiarity with epilepsy	Orange	Orange	Orange	Orange	Orange	Orange	Orange	Orange	Orange
Specialized knowledge of epileptoneurologic disorders	Orange	Orange	Orange	Orange	Orange	Orange	Orange	Orange	Orange
Specialized knowledge of child/adolescent development and MH	Orange	Orange	Orange	Orange	Orange	Orange	Orange	Orange	Orange
Management of quality indicator and improvement work	Orange	Orange	Orange	Orange	Orange	Orange	Orange	Orange	Orange

Psychological Treatments for the World: Lessons from Low- and Middle-Income Countries

Daisy R. Singla,^{1,2} Brandon A. Kohrt,³
Laura K. Murray,⁴ Arpita Anand,⁵
Bruce F. Chorpita,⁶ and Vikram Patel^{5,7,8}

Annu. Rev. Clin. Psychol. 2017. 13:149-81



Table 2. Effect of the Friendship Bench Intervention on Scores for Common Mental Disorders, Depression Symptoms, Anxiety Symptoms, Disability, and Quality of Life at 6 Months

Outcome	Mean (95% CI)		Analysis			
	Intervention (n = 260)	Control (n = 261)	Unadjusted Mean Difference (95% CI)	P Value	Adjusted Mean Difference (95% CI) ^a	P Value
Continuous						
Primary						
SSQ-14 score	3.81 (3.28 to 4.34)	8.90 (8.33 to 9.47)	-5.09 (-5.86 to -4.31)	<.001	-4.86 (-5.63 to -4.10)	<.001
Nonprespecified secondary						
PHQ-9 score	4.50 (3.95 to 5.05)	11.01 (9.78 to 12.24)	-6.52 (-7.71 to -5.33)	<.001	-6.36 (-6.45 to -5.27)	<.001
Tertiary						
GAD-7 score	3.74 (3.27 to 4.21)	9.46 (8.68 to 10.24)	-5.71 (-6.71 to -4.71)	<.001	-5.73 (-6.61 to -4.85)	<.001
WHODAS 2.0 score	4.87 (4.32 to 5.42)	11.05 (9.56 to 12.54)	-6.18 (-7.70 to -4.67)	<.001	-6.08 (-7.46 to -4.71)	<.001
EQ-5D score	0.85 (0.83 to 0.87)	0.72 (0.68 to 0.76)	0.12 (0.08 to 0.17)	<.001	0.12 (0.08 to 0.17)	<.001

JAMA | Original Investigation

Effect of a Primary Care-Based Psychological Intervention on Symptoms of Common Mental Disorders in Zimbabwe: A Randomized Clinical Trial

Lancet 2017; 389: 176–85

JAMA December 27, 2016 Volume 316, Number 24



The Healthy Activity Program (HAP), a lay counsellor-delivered brief psychological treatment for severe depression, in primary care in India: a randomised controlled trial



Vikram Patel*, Benedict Weobong*, Helen A Weiss, Arjita Anand, Bhargav Bhat, Basovraj Kati L, Soma Dimijjian, Ricardo Araya, Steve D Hollon, Michael King, Lakshmi Vijayakumar, A-Lu Park, David McDaid, Terry Wilson, Richard Velleman, Betty R Kirkwood, Christopher Fairburn†

Lancet 2017; 389: 176–85

	EUC plus HAP (n=245)*	EUC alone (n=248)*	Adjusted mean difference (95% CI)†	p value
Primary outcomes				
BDI-II score at 3 months	19/99 (15/70)	27/52 (13/26)	-7.57 (-10.27 to -4.86)	<0.0001
Depression remission at 3 months	147/230 (64%)	91/236 (39%)	1.61 (1.34 to 1.93)	<0.0001

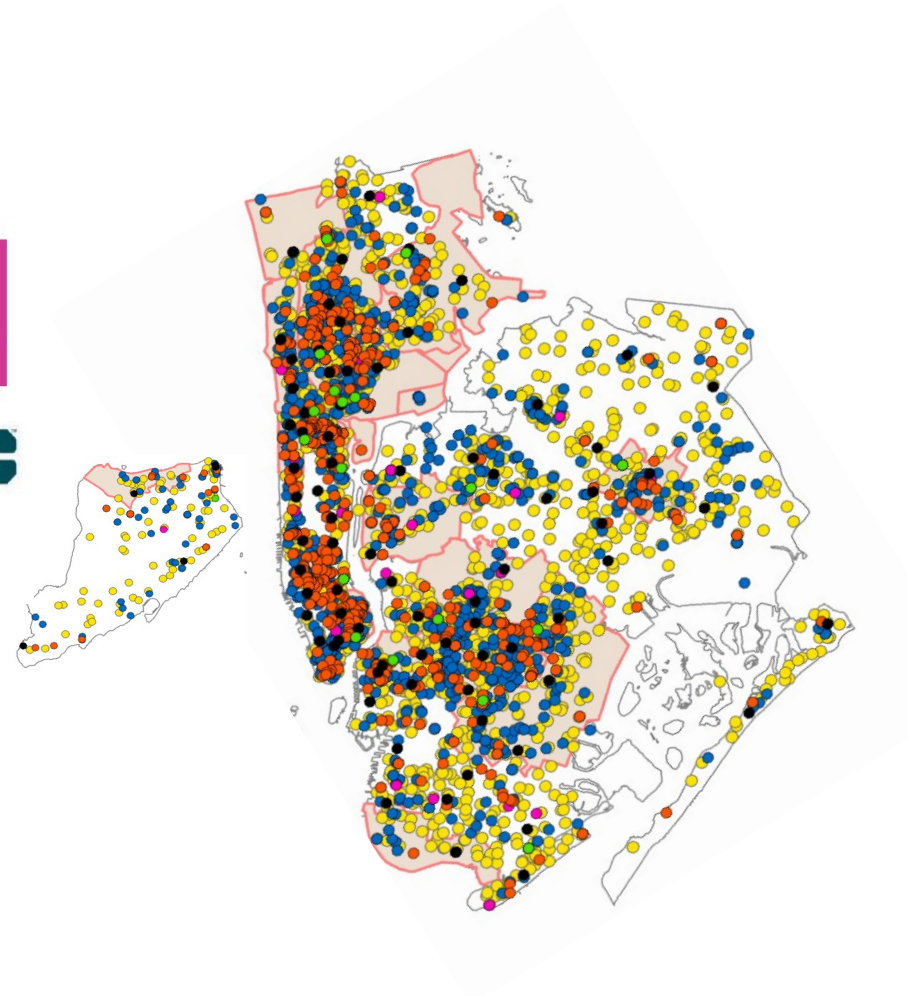
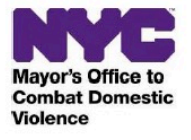


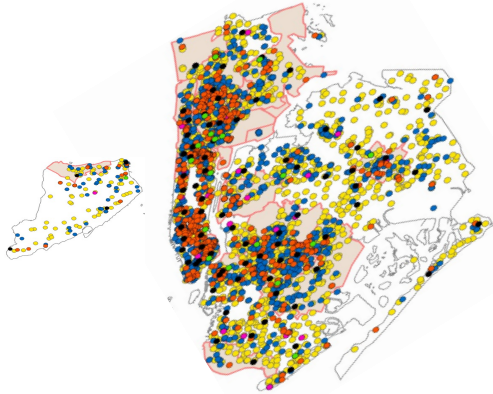
The effect of VISHRAM, a grass-roots community-based mental health programme, on the treatment gap for depression in rural communities in India: a population-based study

Rahul Shidhaye, Vaibhav Murhar, Siddharth Gangale, Luke Aldridge, Rahul Shastri, Rachana Parikh, Ritu Shrivastava, Suvarna Damle, Tasneem Raja, Abhijit Nadkarni, Vikram Patel

www.thelancet.com/psychiatry Vol 4 February 2017

“The prevalence of current depression fell from a baseline of 14.6% (95% CI 12.8–16.4) to 11.3% (9.9–12.8) at 18 months (p=0.005). The contact coverage for current depression was six-times higher in the 18-month survey population, from 4.3% (95% CI 1.5–7.1) in the baseline survey population to 27.2% (21.4–33.7) in the 18 month survey population (p<0.001).”





HESTER ST



Anthropocene Alliance



**CLIMATE
CARES**

Mental health in the climate crisis

AGU THRIVING EARTH
EXCHANGE

Individuals, Communities, Norms

(Direct care, morbidity, illness)

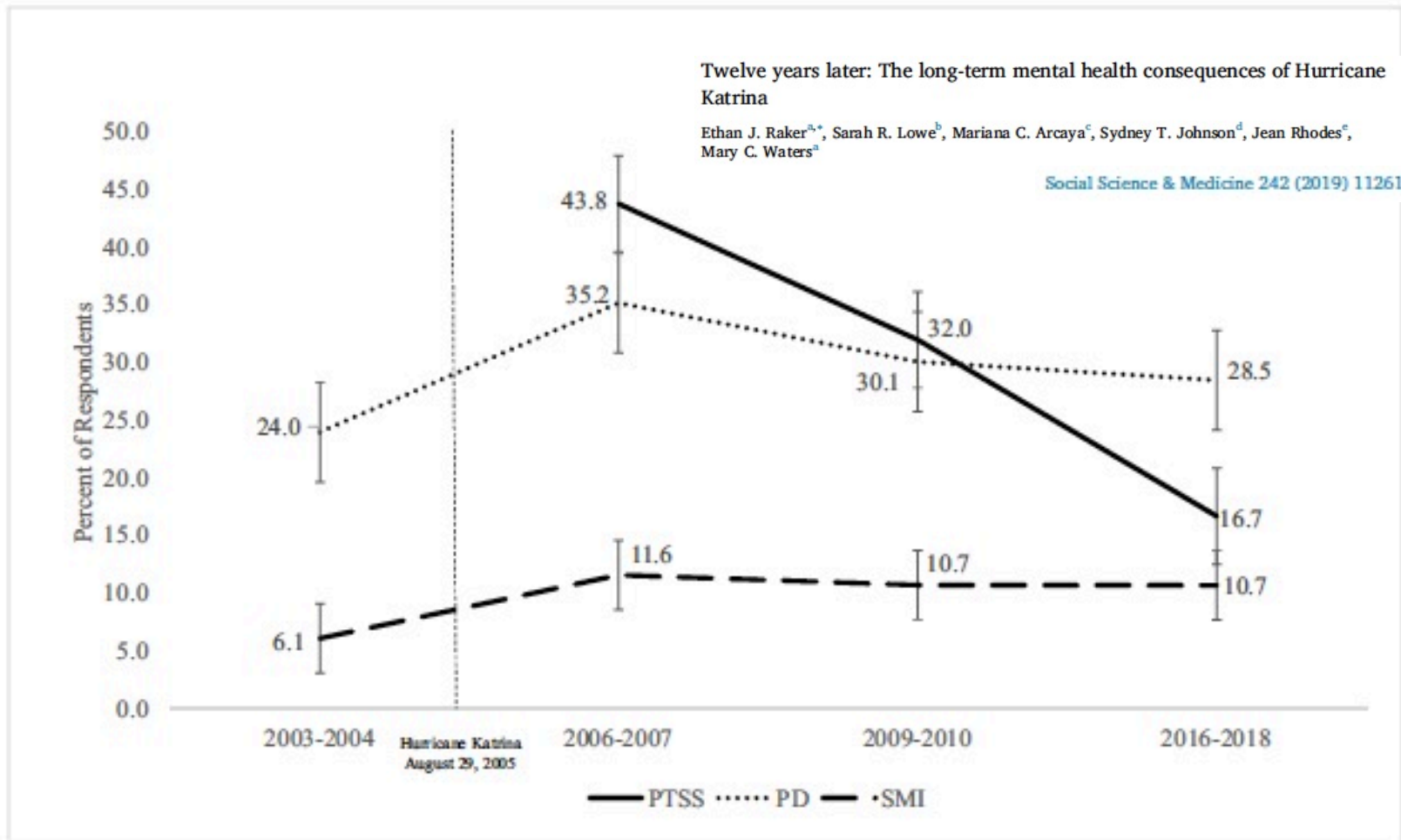
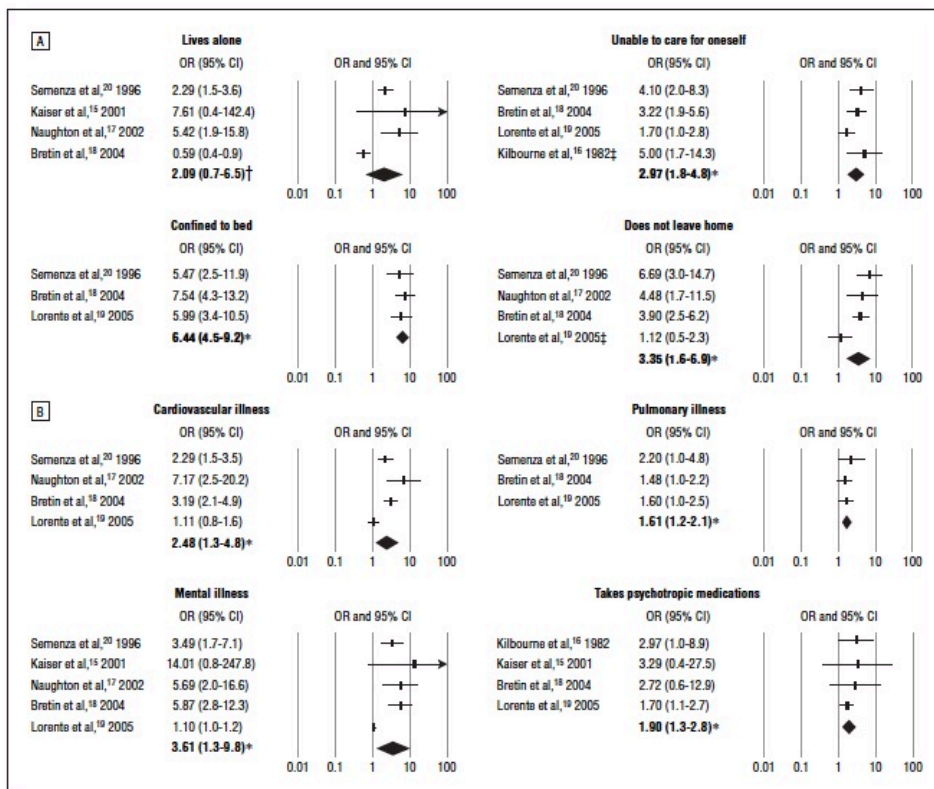


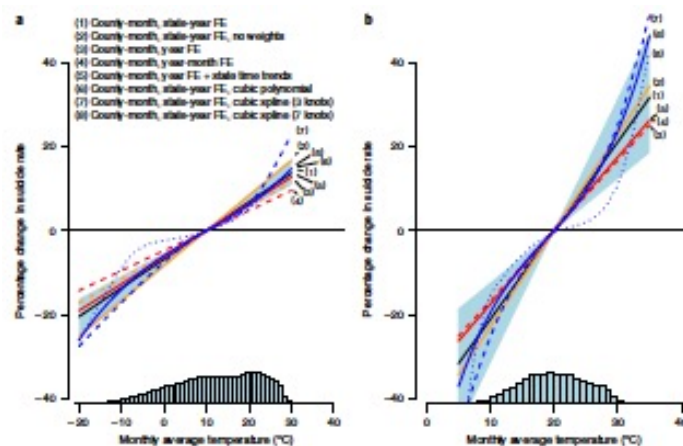
Fig. 1. PTSS, PD, and SMI among Resilience in Survivors of Katrina (RISK) sample (n = 438) (Means and 95% CI).

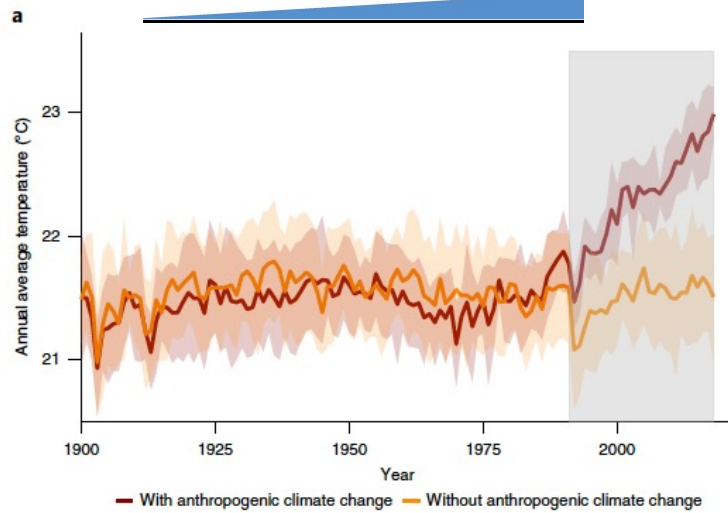
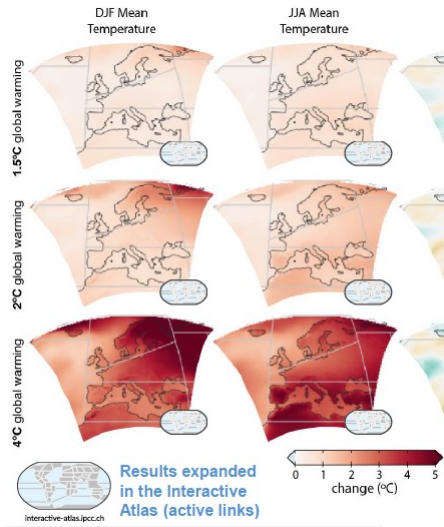


Review
**Possible Biological Mechanisms Linking Mental
Health and Heat—A Contemplative Review**

Mare Löhmus^{1,2}

Int J Environ Res Public Health. 2018 Jul; 15(7): 1515





Voices Across America

Opinion: It's not the heat. It's the existential dread.

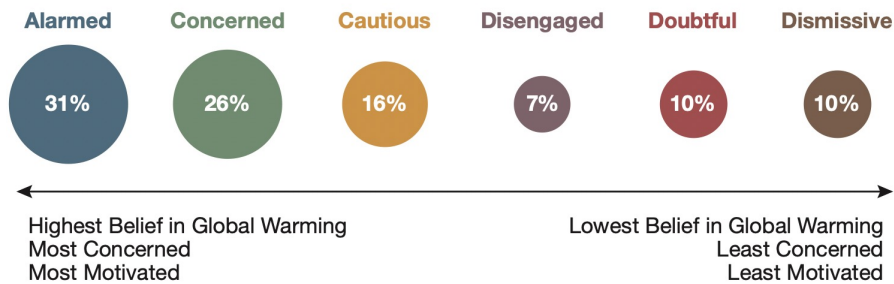


The Coming Age of Climate Trauma

Three years after a devastating wildfire, a California community faces another crisis: PTSD. Is what's happening there a warning to the rest of us?



Climate anxiety



November 2019. Base: Americans 18+ (N = 1,303).



Contents lists available at [ScienceDirect](https://www.sciencedirect.com)

Journal of Environmental Psychology

journal homepage: www.elsevier.com/locate/jep

Development and validation of a measure of climate change anxiety

Susan Clayton*, Bryan T. Karazsia

The College of Wooster, United States

~30% above midpoint on self-report impairment-
interferes with potential; enjoying friends/family
~25% above midpoint on cognitive involvement-
interferes with concentration; sleep

The Hogg Eco-Anxiety Scale: Development and Validation of a Multidimensional Scale

AUTHORS

Teaghan Hogg, Samantha Stanley, Léan O'Brien, Marc Wilson, Clare Watsford



NEWSLETTER

MEDICALNEWS TODAY



ADVERTISEMENT

autho

Let's Talk Strategy

Schedule a chat about your CIAM solution and we'll send you a BBQ grill kit.

Book Now



Eco-anxiety: 75% of young people say 'the future is frightening'



Written by [Robby Berman](#) on September 28, 2021 —
Fact checked by [Rita Ponce](#), Ph.D.

ADVERTISEMENT

Eco-anxiety and Climate Emergency Research Group





Imperial College
London

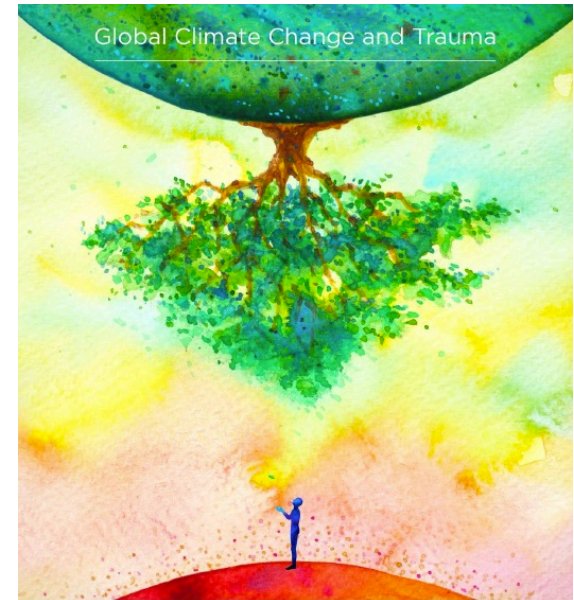
INSTITUTE OF GLOBAL
HEALTH INNOVATION

Grantham Institute
Climate Change and the Environment
An Institute of Imperial College London

Grantham Institute
Briefing paper No 36
May 2021

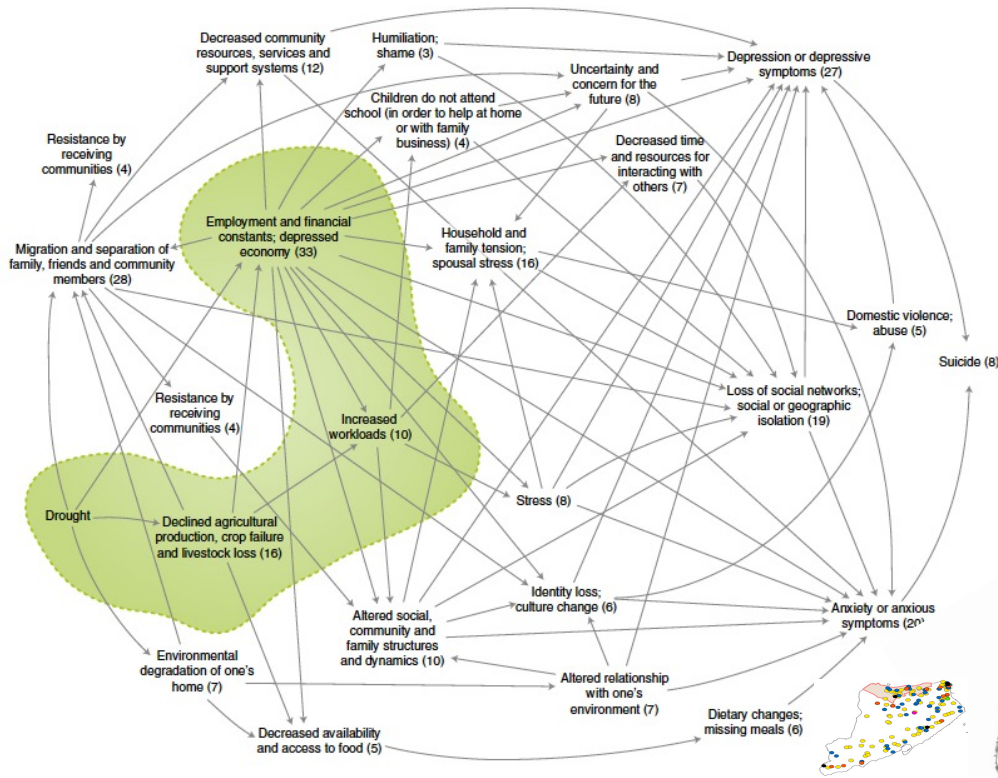
The impact of climate change on mental health and emotional wellbeing: current evidence and implications for policy and practice

DR EMMA LAWRENCE, RHIANNON THOMPSON, GIANLUCA FONTANA, DR NEIL JENNINGS



Communities

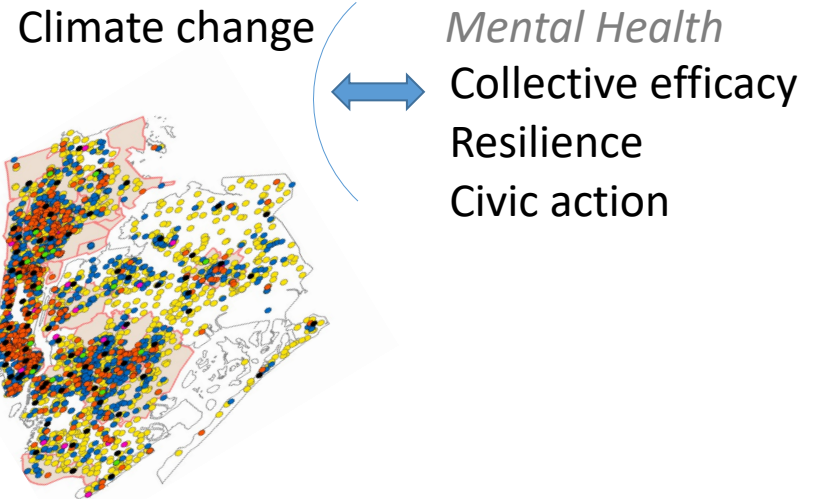
(Other's outcomes, wellbeing, collective action/efficacy)



H Berry et al 2018

Climate change → Mental Health

Climate change ← Mental Health



Social determinants of mental health



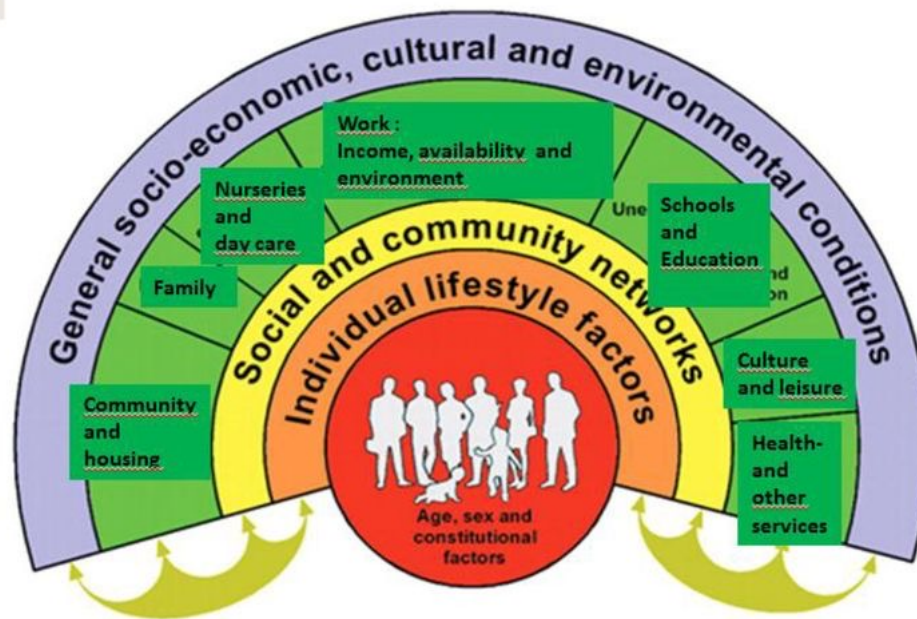
Environmental:

- social support
- social integration
- perceived control
- social capital
- being active/ overall participation (work, school, democratic etc)

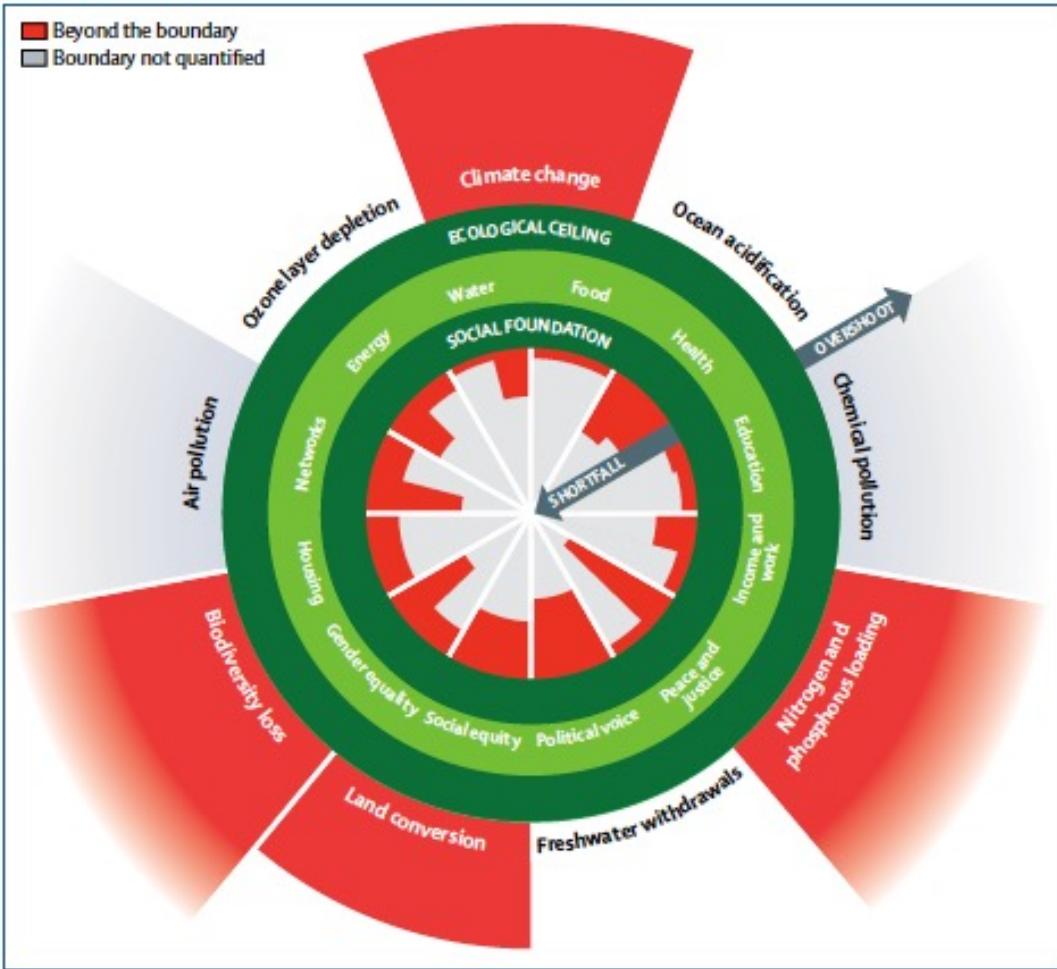
+ environmental factors in kindergartens schools , workplaces and communities

Individual:

- experience of mastery and control
- temperament

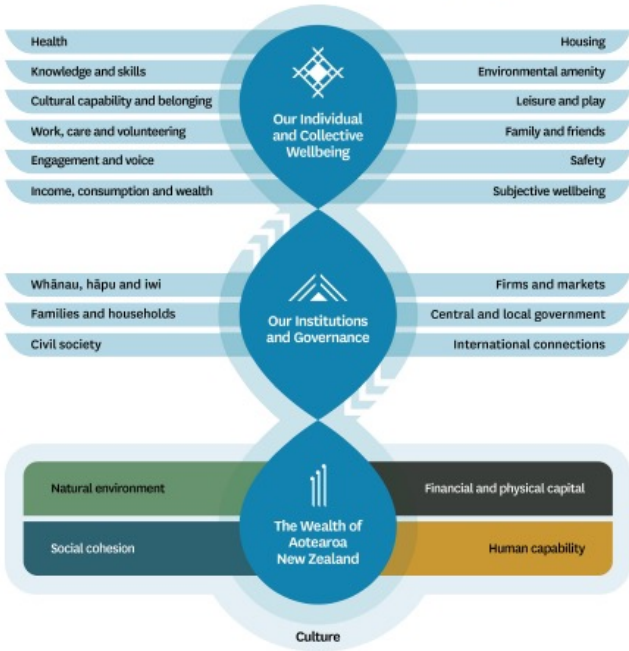




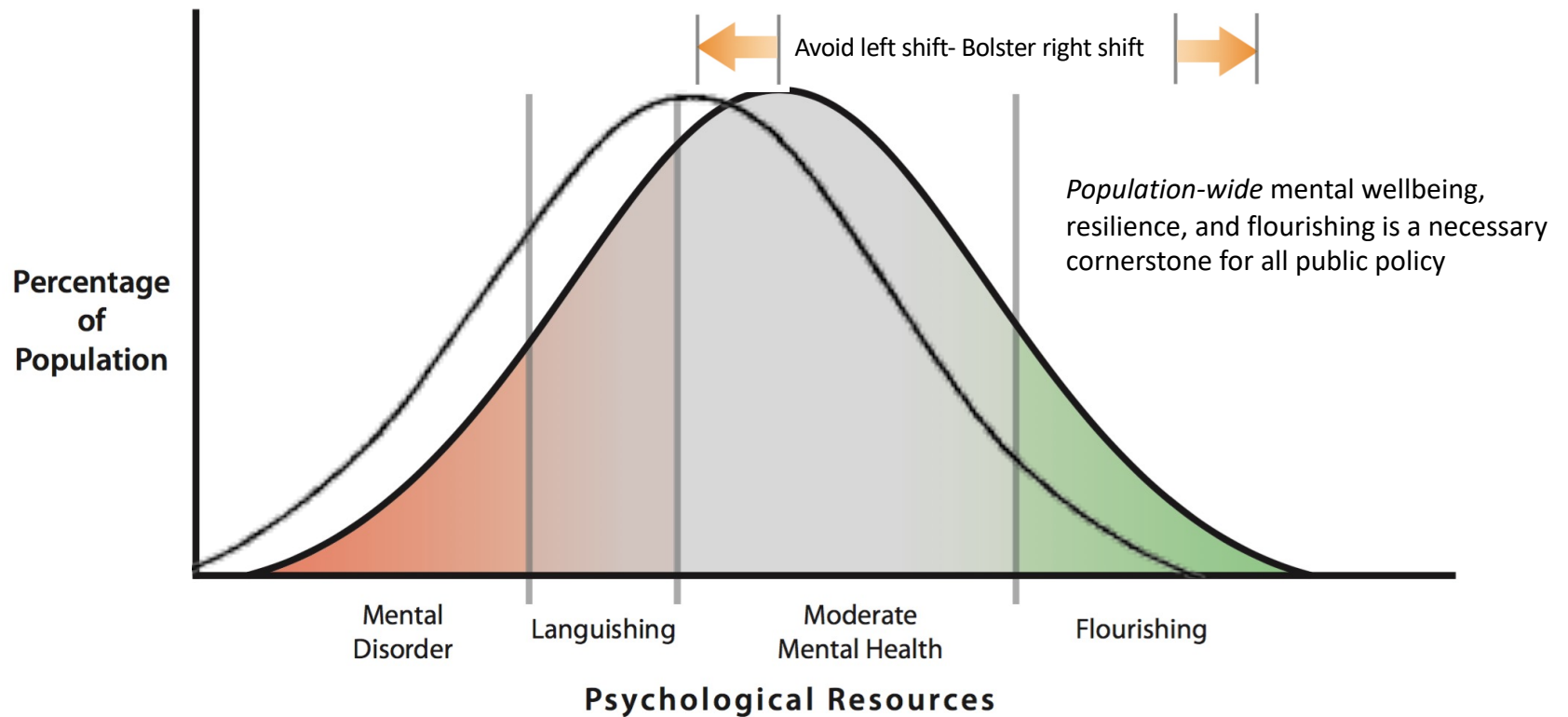


Overview of the 2021 LSF

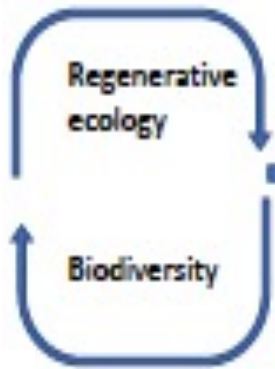
The new version of the LSF is introduced in the following diagram.



People need *psychological* resources to endure & take on these challenges



Based on a figures in Huppert et al. (Eds). The Science of Well-being



Habitable earth



IPBES WORKSHOP ON BIODIVERSITY AND PANDEMICS



Habitable communities (Place)



Earth climate/capacity

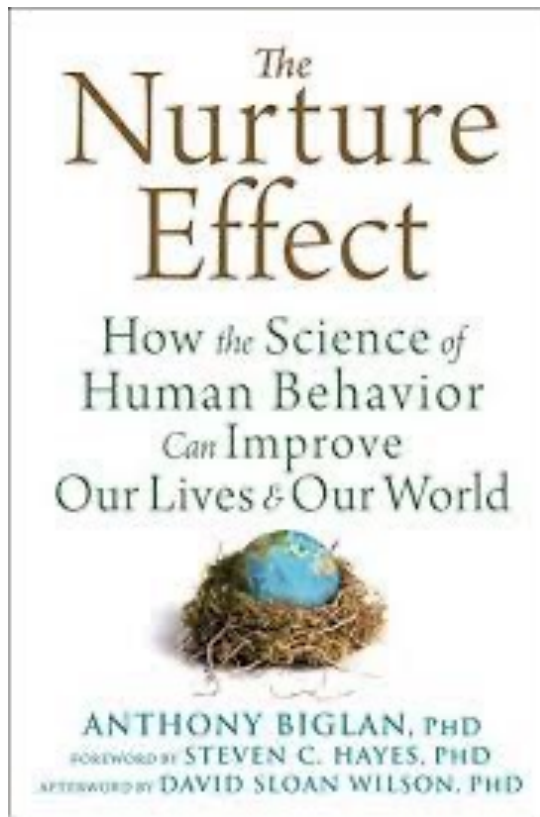
Social climate/capacity

Norms

(Culture, society, power)

In addition to reforming public policies, addressing the social determinants of mental health requires changing social norms; the two are intimately related but require different approaches.

-- Ruth Shim, Michael T Compton, *Psychiatric Services*, June, 2018



New Harbinger Publications, 2015

Scaling up and scaling out: Consilience and the evolution of more nurturing societies

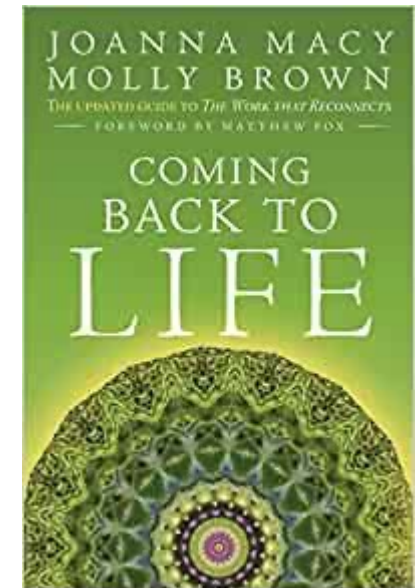
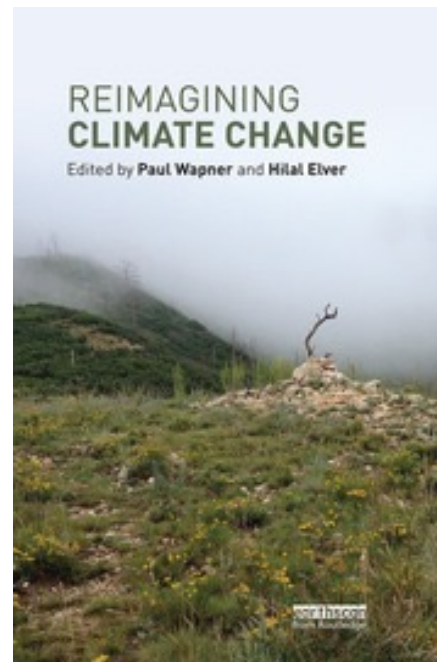
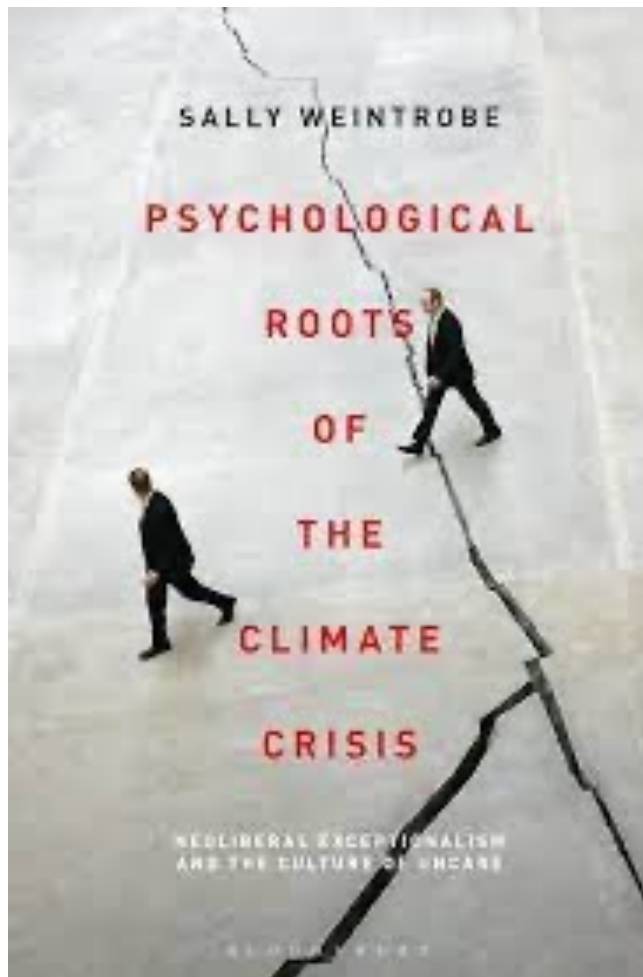


Anthony Biglan^{a,*}, Magnus Johansson^b, Mark Van Ryzin^a, Dennis Embry^c

^a Oregon Research Institute, United States of America

^b Oslo Metropolitan University, Norway

^c PAXIS Institute, United States of America



TERRITORY, POLITICS, GOVERNANCE
2019, VOL. 7, NO. 2, 122-134
<https://doi.org/10.1080/21622671.2018.1510339>

 **Routledge**
Taylor & Francis Group

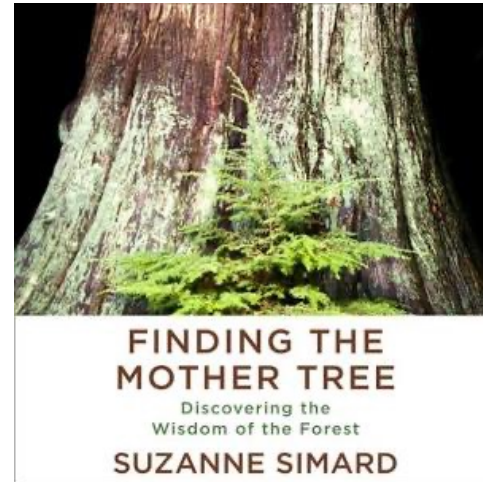
 **Regional
Studies
Association**

ANNUAL LECTURE

 OPEN ACCESS  Check for updates

Imagining the post-fossil city: why is it so difficult to think of new possible worlds?

Maarten Hajer^a and Wytse Versteeg^b



“We live in a world which others imagined. Most of the constructs that oppress us feel like fact, are taught to us as fact – but they are actually evidence of historical imagination. These ideas were imagined before being practiced into solidity, authority, tradition, assumption...

These are not the most beautiful things imagined in human history, but the most violently upheld. So. We are in an imagination battle.”

St Louis Racial Equity Summit 2021 Keynote

<https://adriennemareebrown.net/>