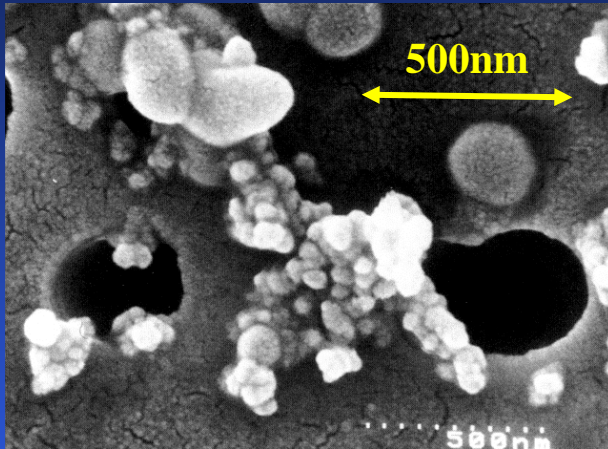




Creating liveable cities
*The role of active and
sustainable travel*

David Newby
*BHF John Wheatley Chair of Cardiology
University of Edinburgh*

Air Pollution Particles



Coarse
10.0 μm

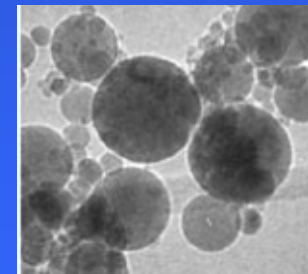
2.5 -

Fine

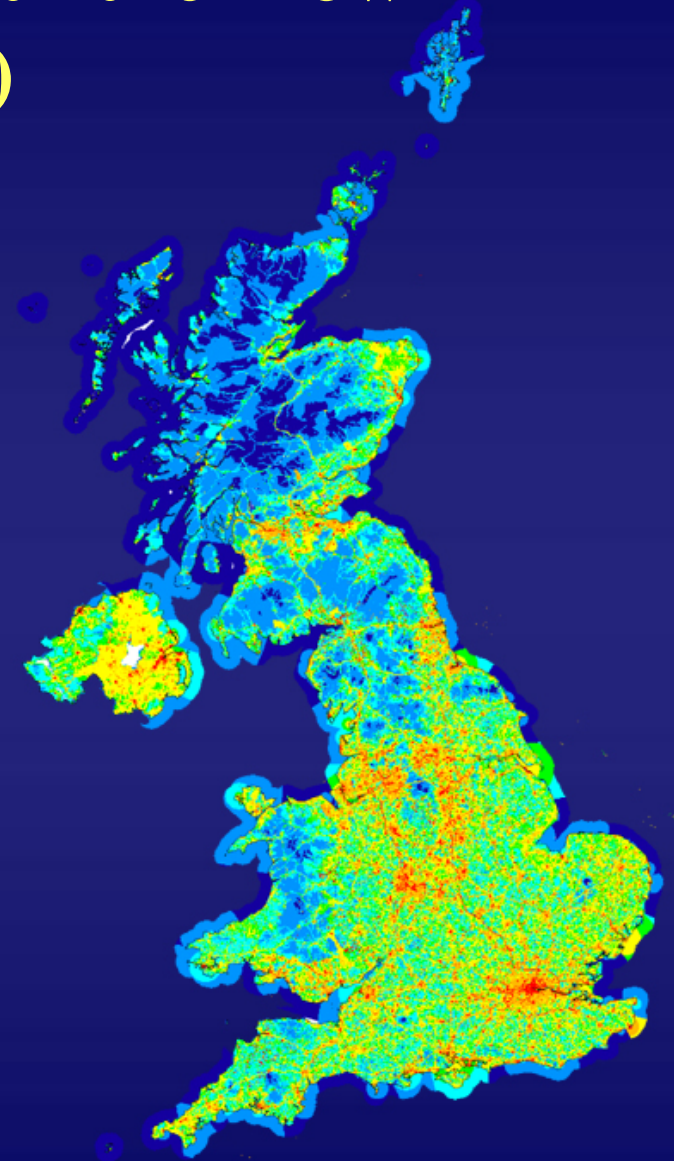
0.1 - 2.5 μm

Ultrafine
(nanoparticles)

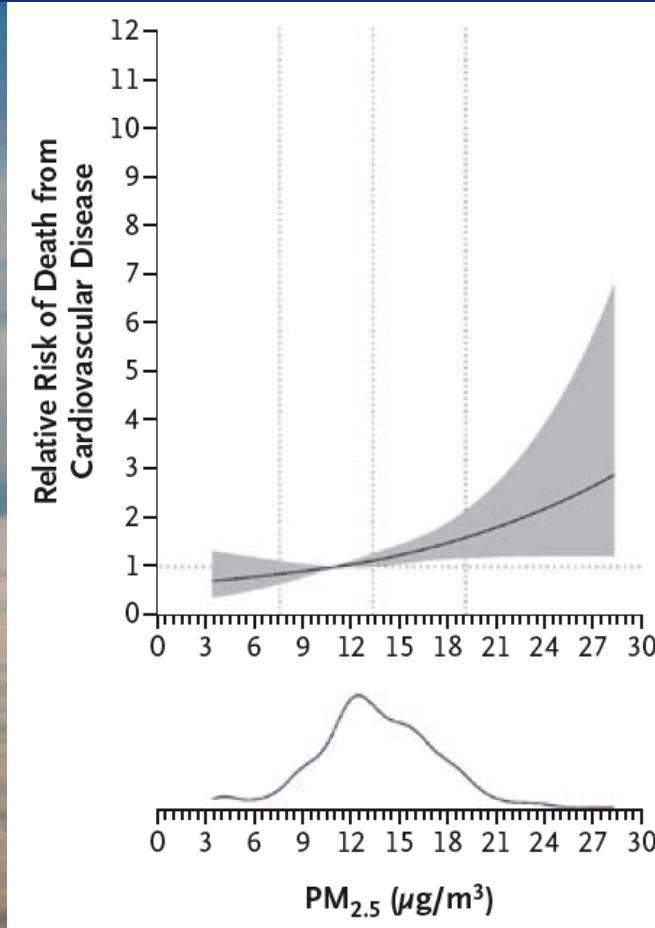
< 0.1 μm



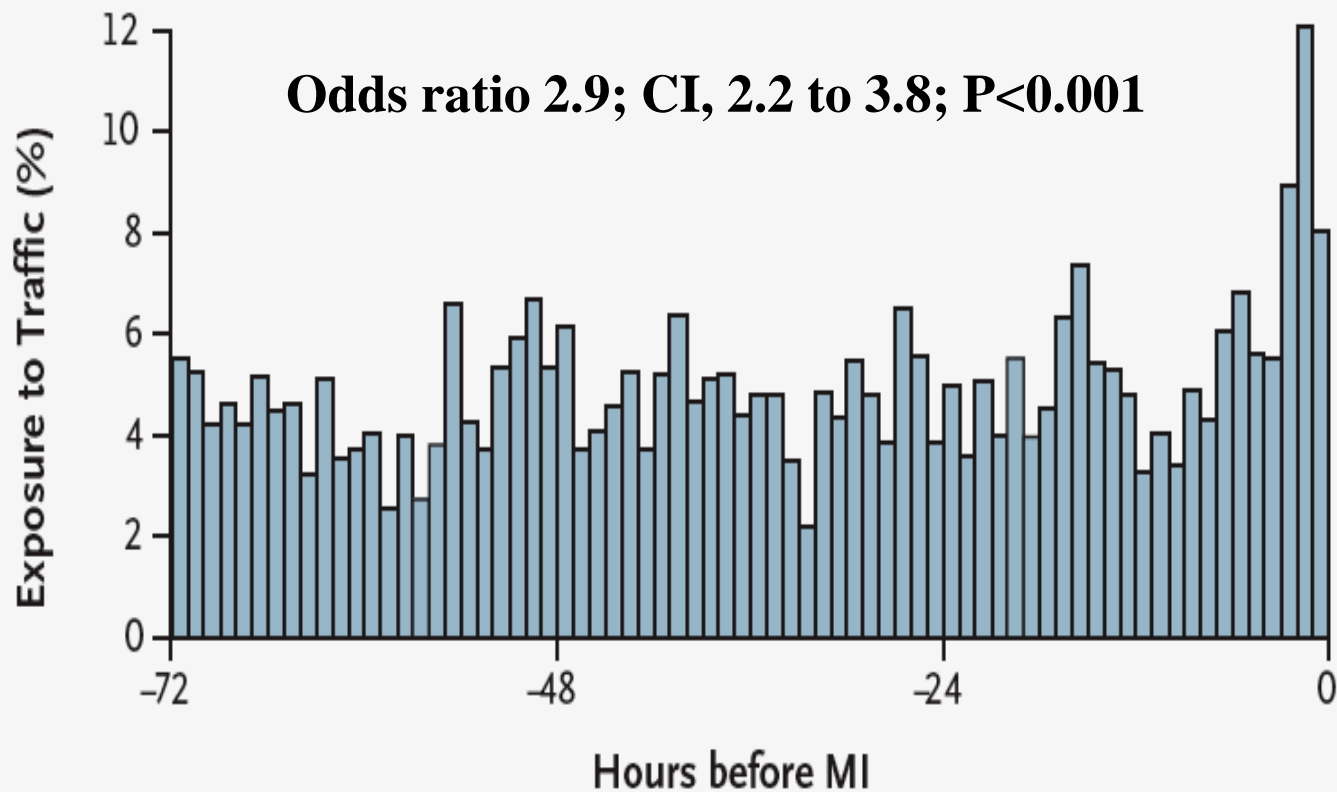
Air Pollution Goes With the Flow (of Traffic!)



Air Pollution and Heart Disease



HEART ATTACK VICTIMS AND TRAFFIC







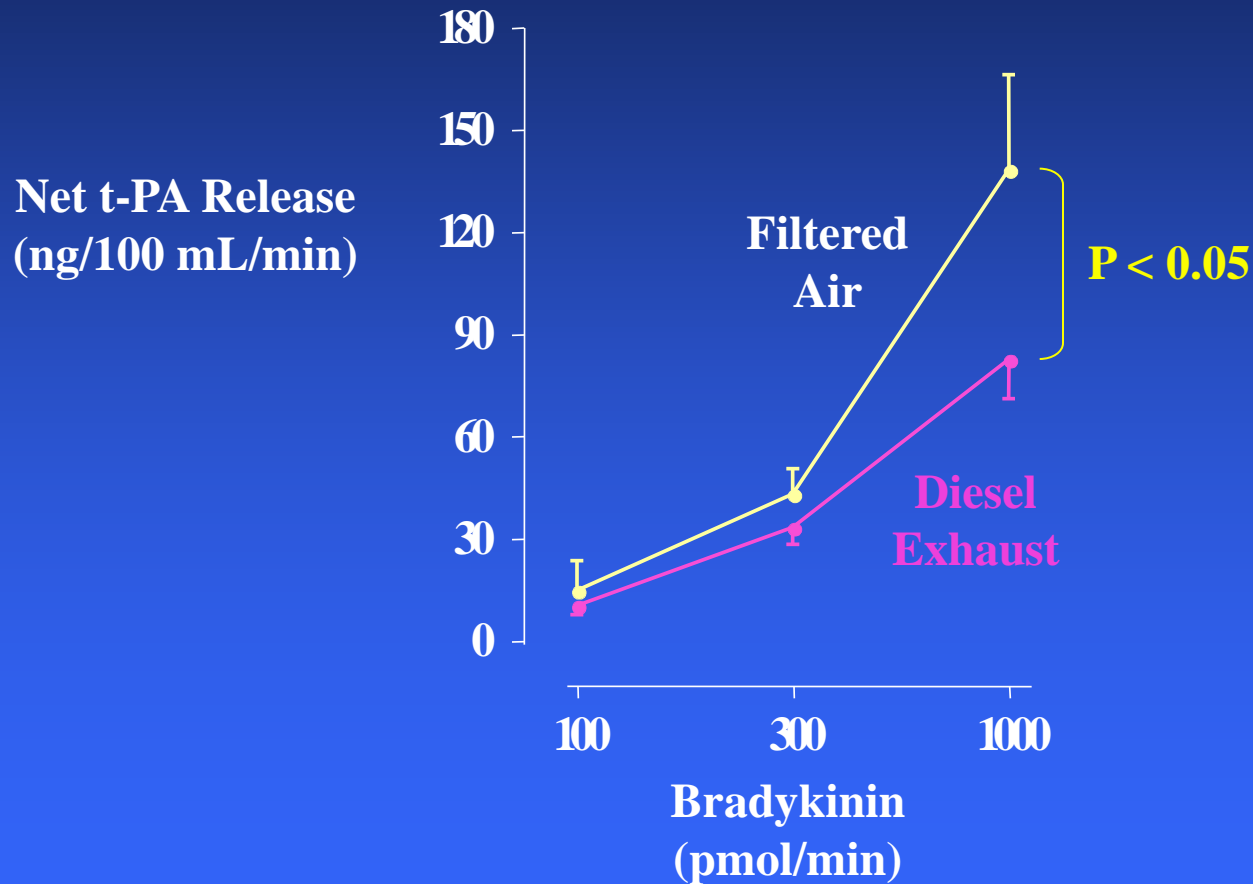


Diesel Exposure Chamber Umeå, Sweden

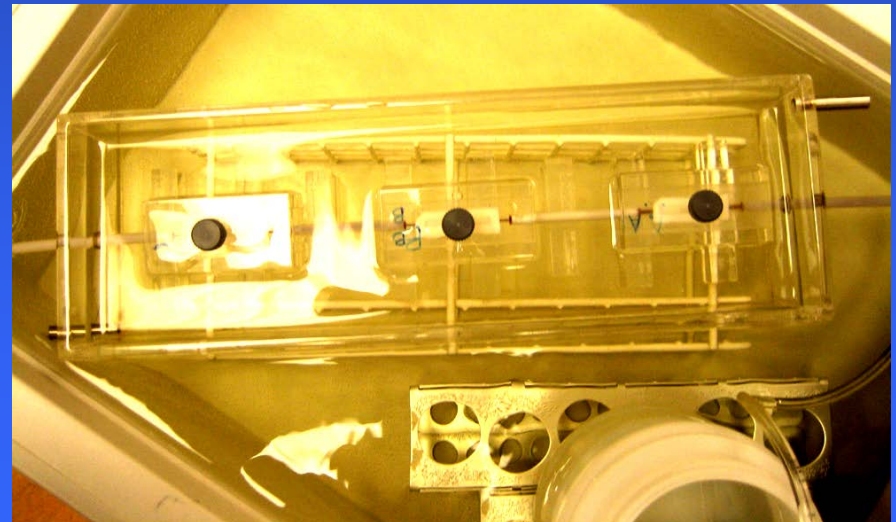
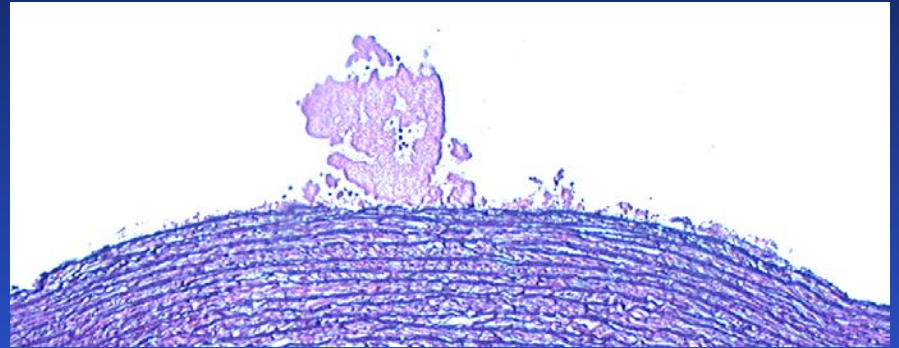




Air Pollution Reduces Release of Clot Dissolving Protein



Blood Clot Formation



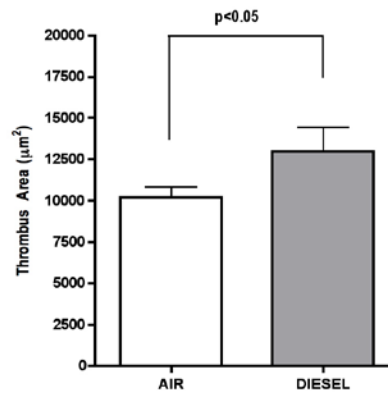


Blood Clots Form More Easily

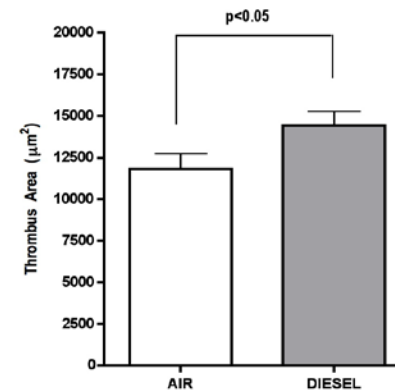


Low Shear Chamber

2 HOURS

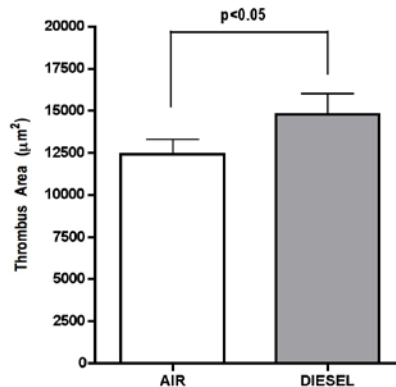


6 HOURS

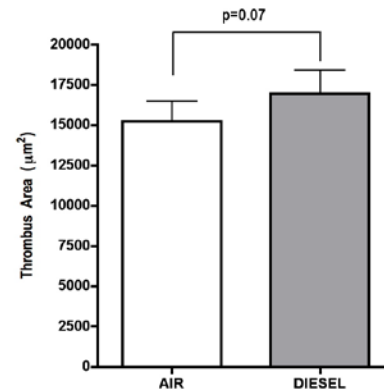


High Shear Chamber

2 HOURS



6 HOURS

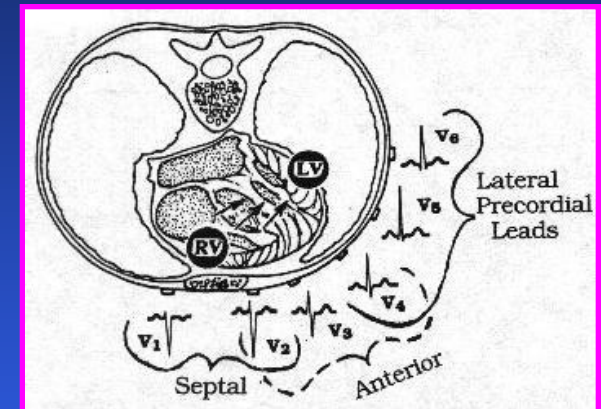
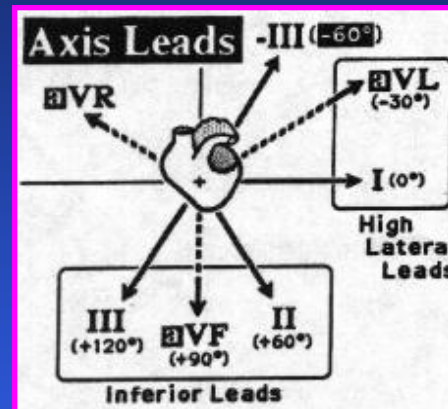
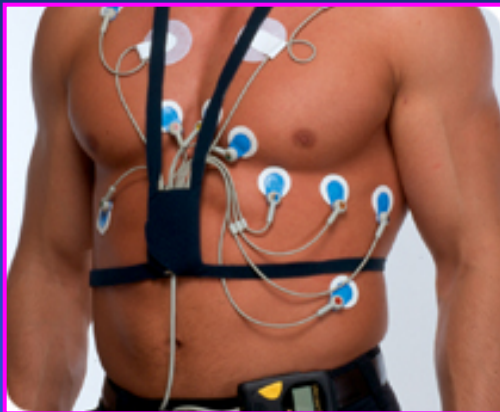




What About Patients with Heart Disease?

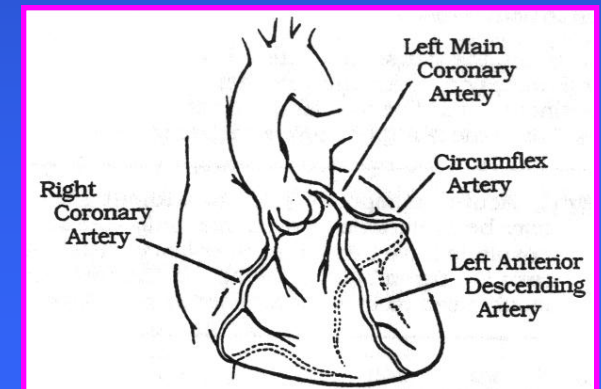


Measuring Heart Stress



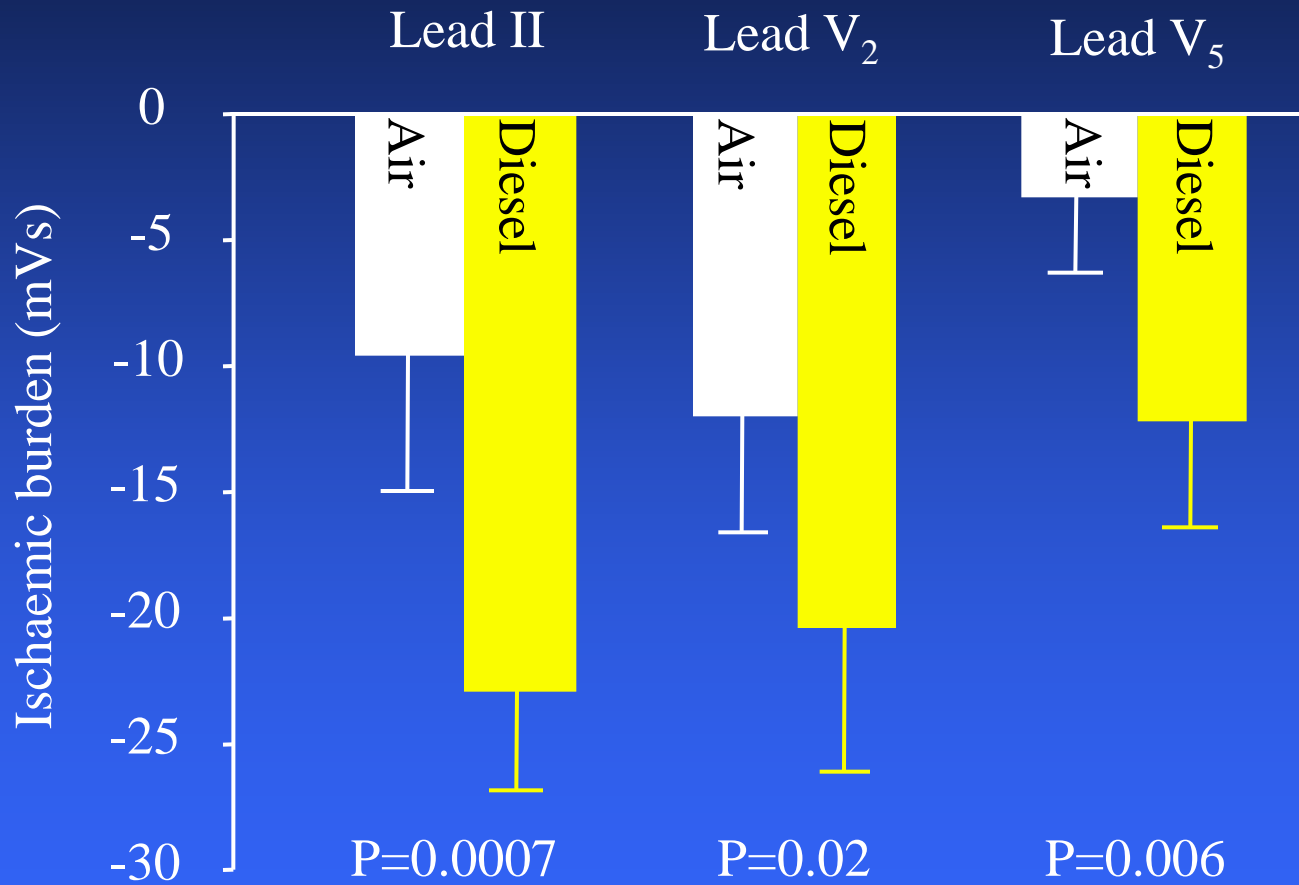
Lead II, V₂ and V₅

Regions correspond to distribution of three main coronary arteries and reflect global ischaemia

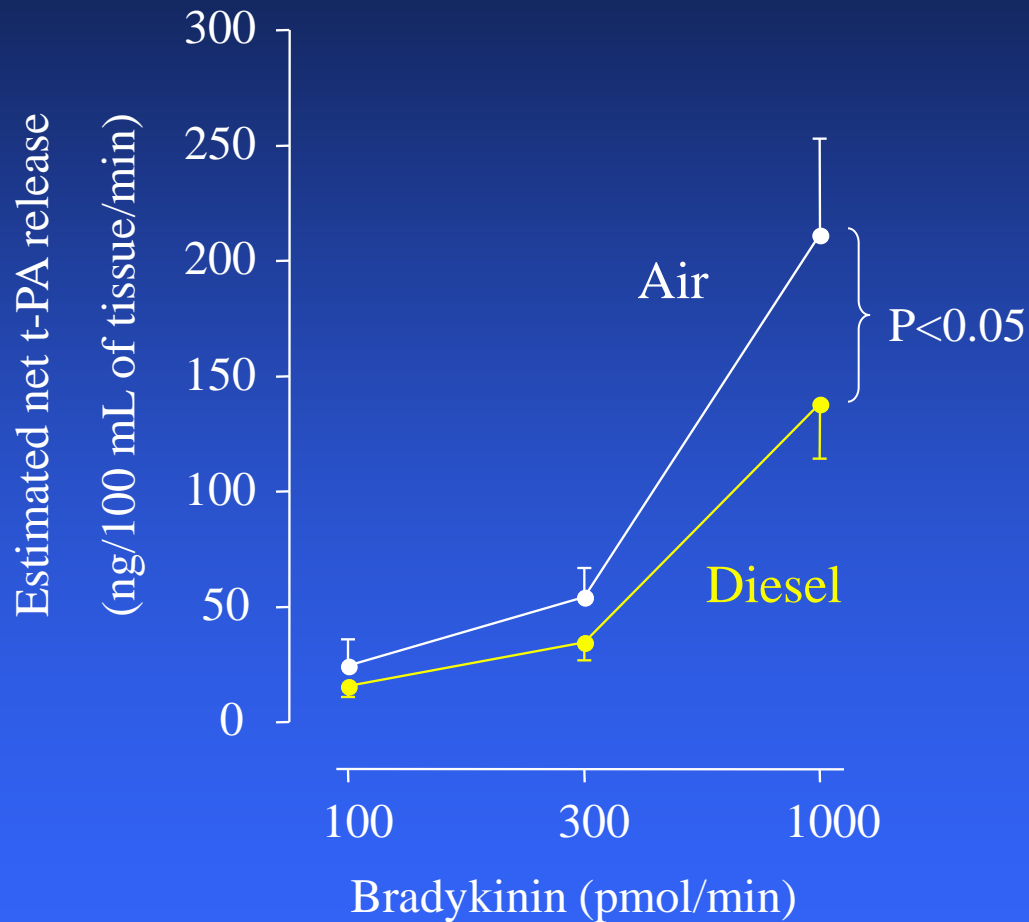




Heart Stress



Less Clot Dissolving Protein





Atmospheric Air Pollution or Diesel Exhaust?



rivm

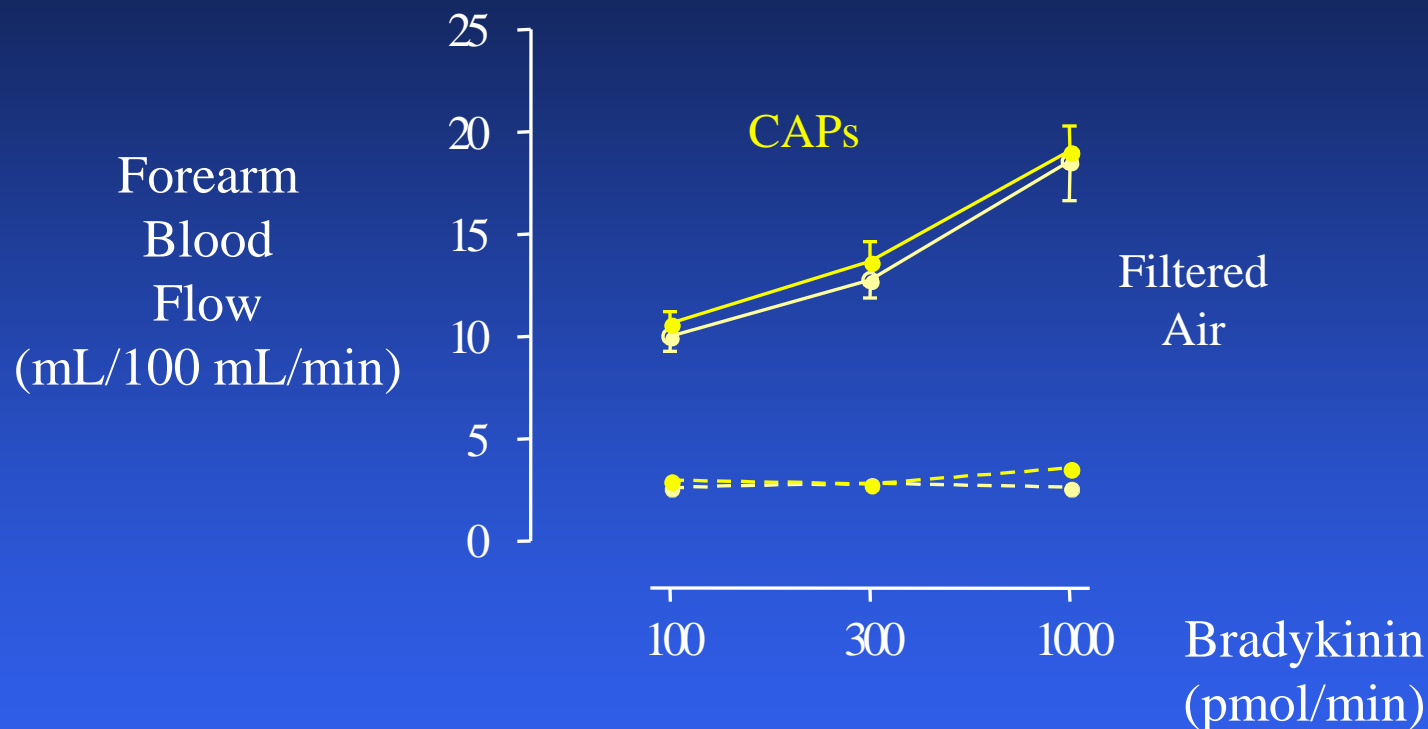
Rijksinstituut
voor Volksgezondheid
en Milieu

MAPCEL

Mobile Ambient Particle Concentrator Exposure Laboratory



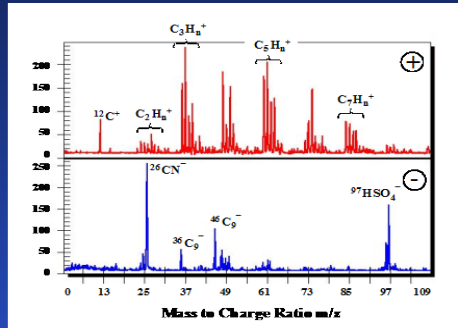
NO EFFECT!!



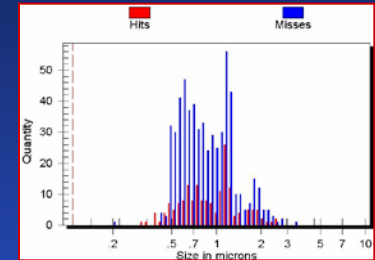
No difference between ambient particle and air exposures in :

- Endothelium-dependent or -independent vasodilatation
- Endogenous fibrinolysis

The ATOFMS (Aerosol Time-of-Flight Mass Spectrometer)

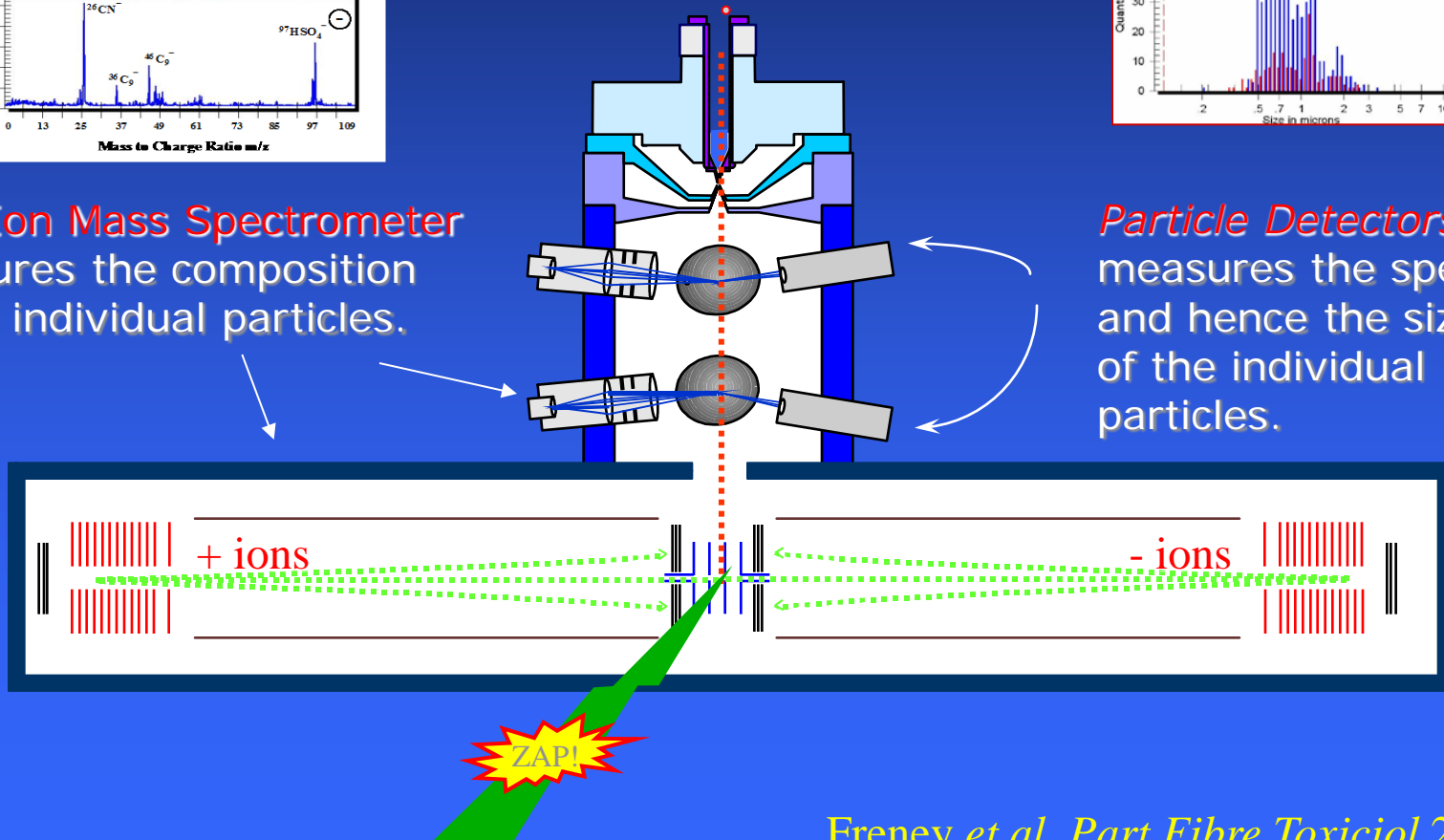


Atmospheric Particles

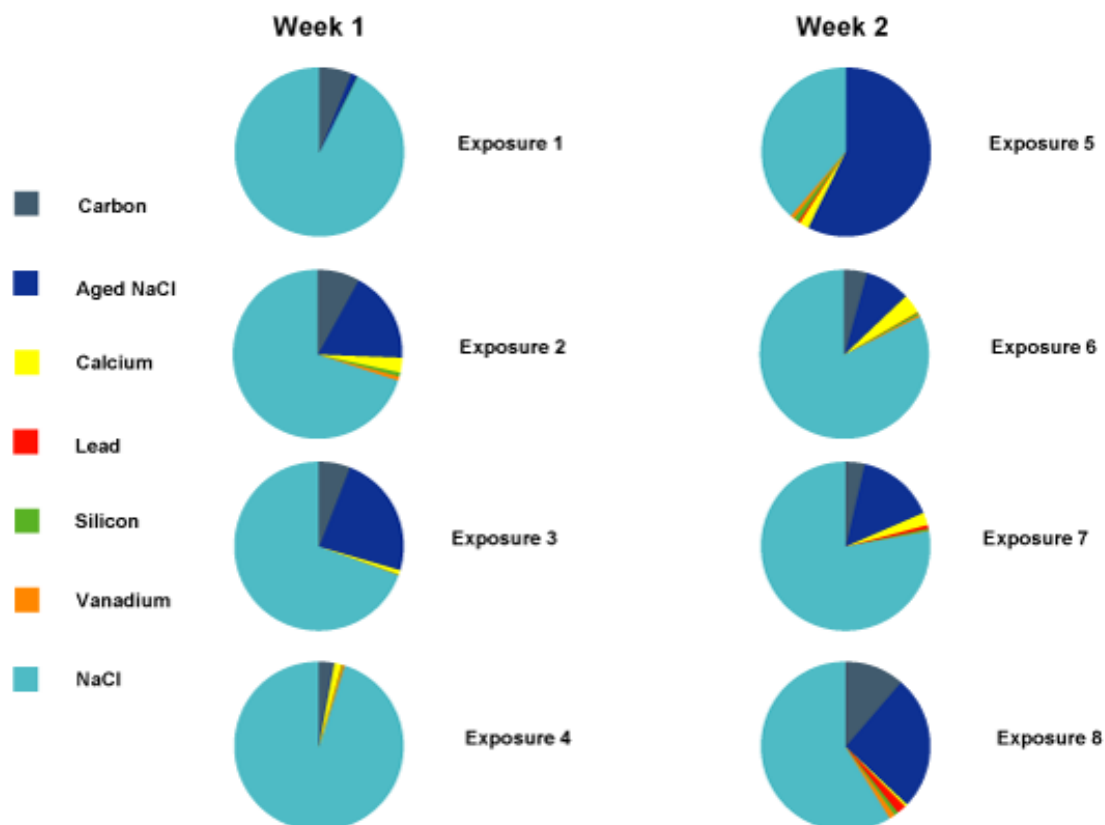


Dual Ion Mass Spectrometer measures the composition of the individual particles.

Particle Detectors measure the speed and hence the size of the individual particles.



Edinburgh Air!



Primary Constituent was Sodium Chloride

Edinburgh is a Coastal City



Air Pollution Goes With the Flow (of Traffic!)

Model of local nitrogen oxide levels in central London

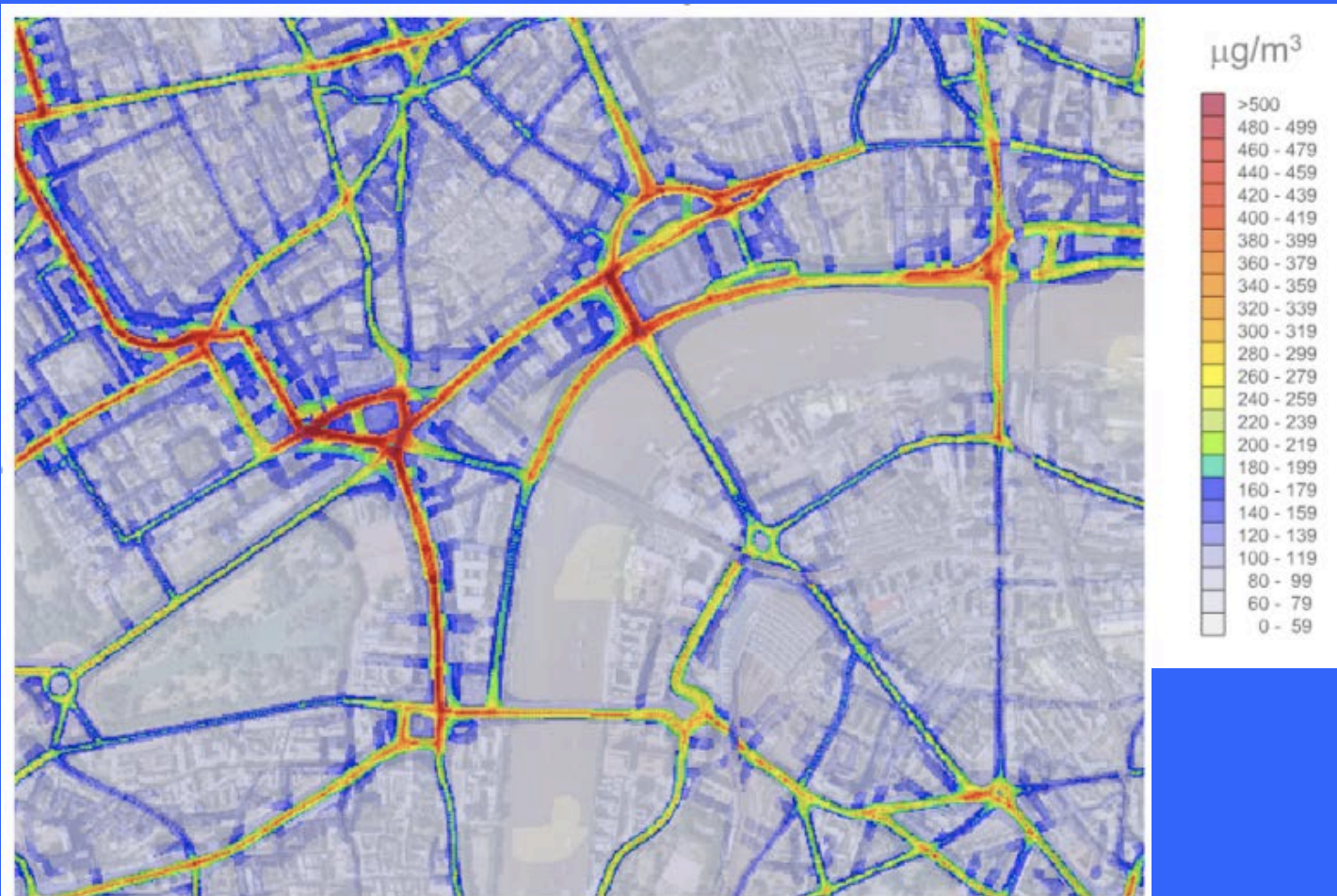
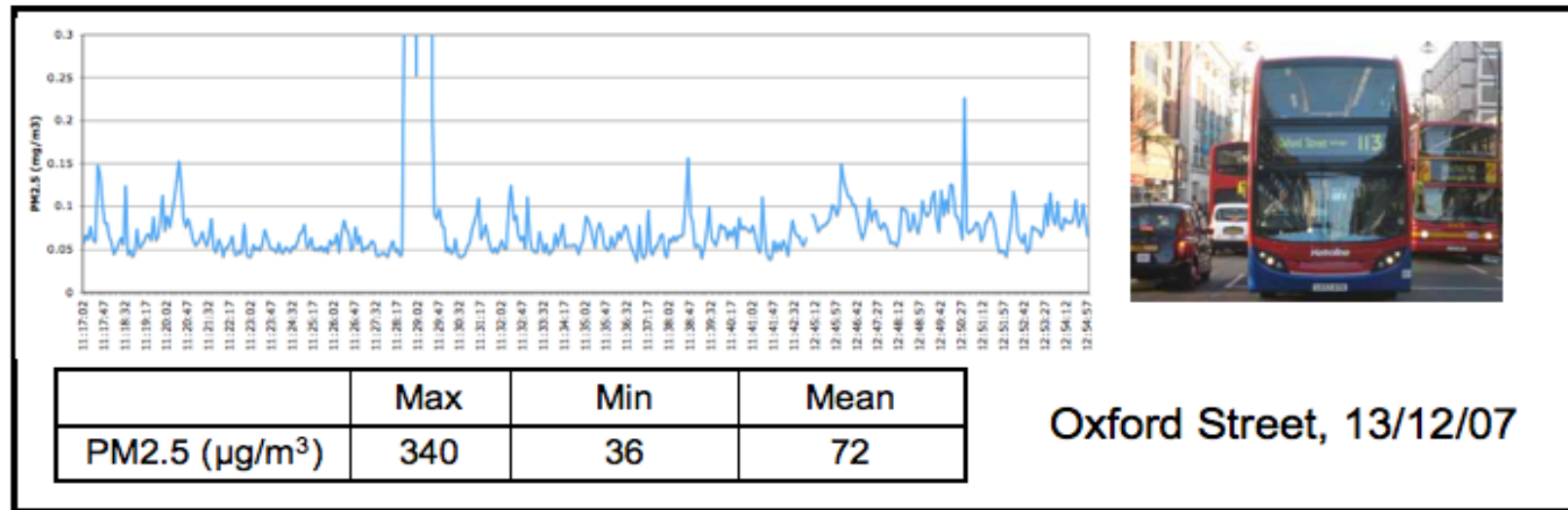
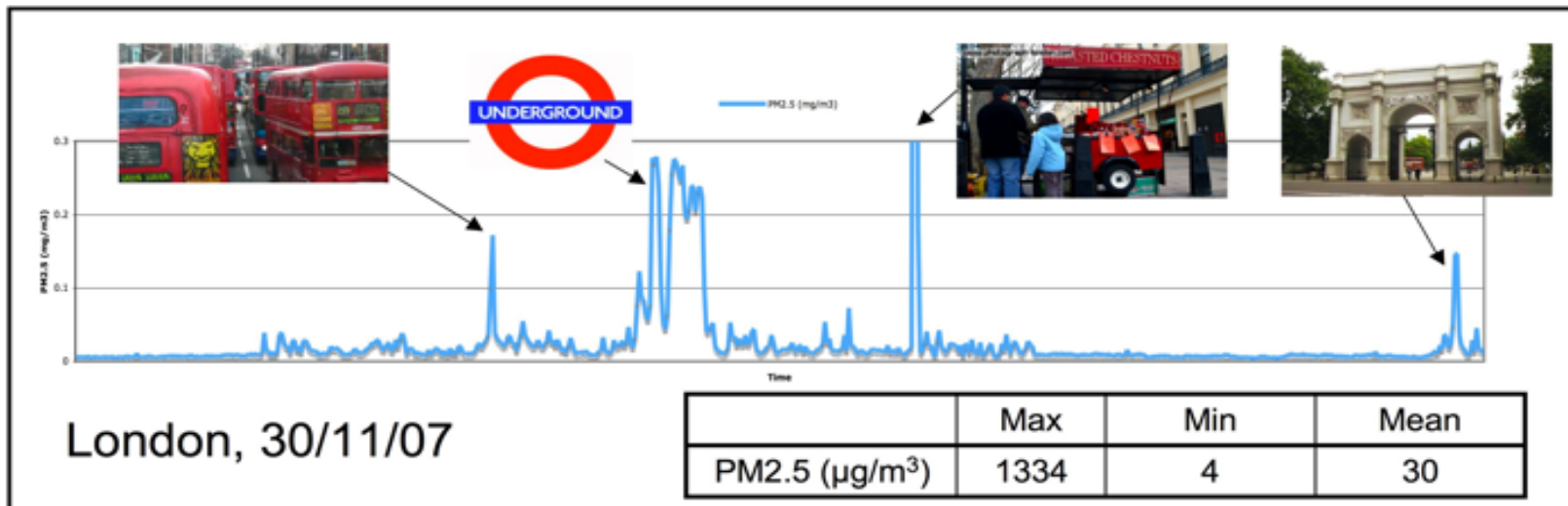


Image courtesy of the London Air Quality Network

My Trip to BHF in London

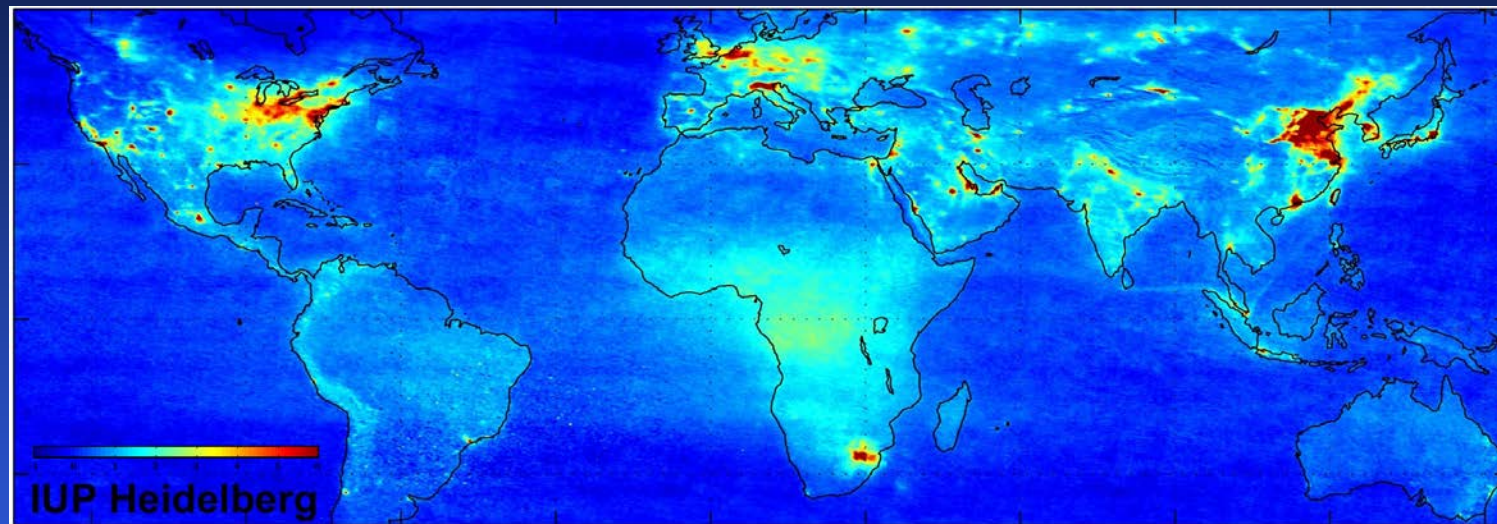




Why Beijing?



Global Air Pollution Emissions



Annual mean PM₁₀ in residential areas ($\mu\text{g}/\text{m}^3$)

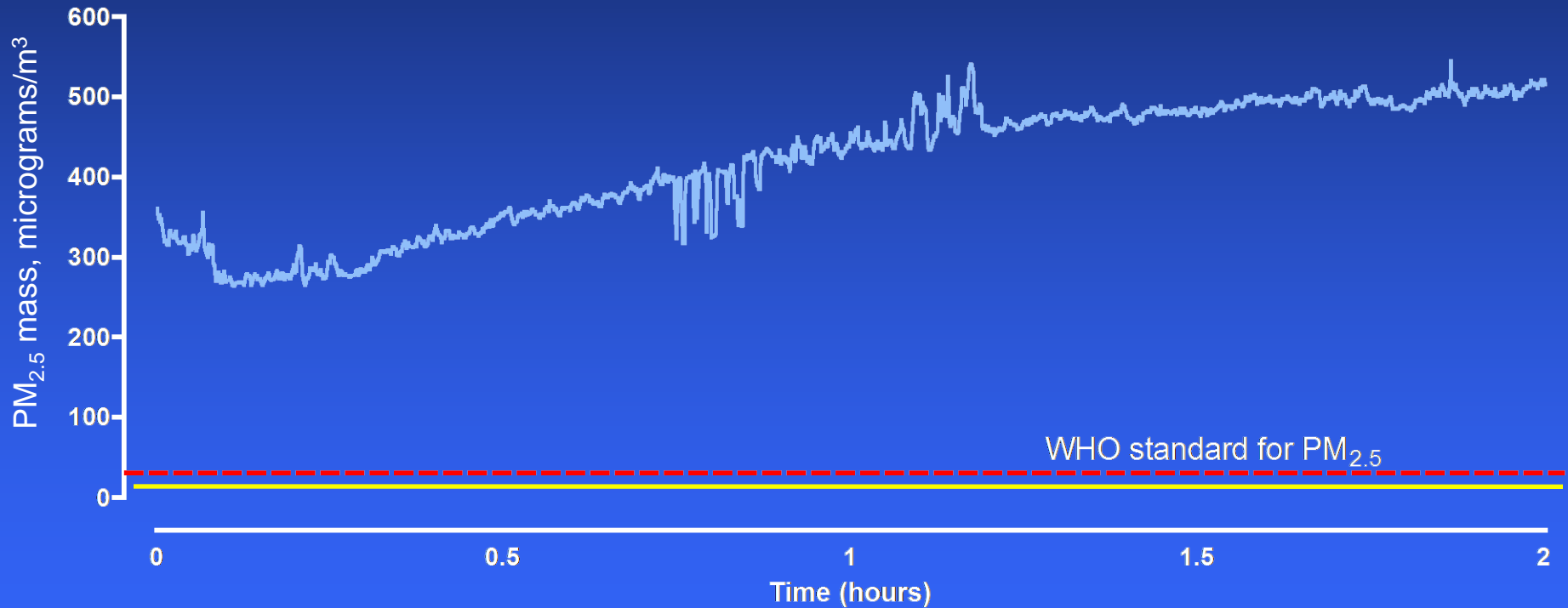
Beijing	106	Edinburgh	18
Buenos Aires	107	London	40
Calcutta	153	Los Angeles	38
Delhi	187	Mexico City	69
Karachi	220	Tokyo	43



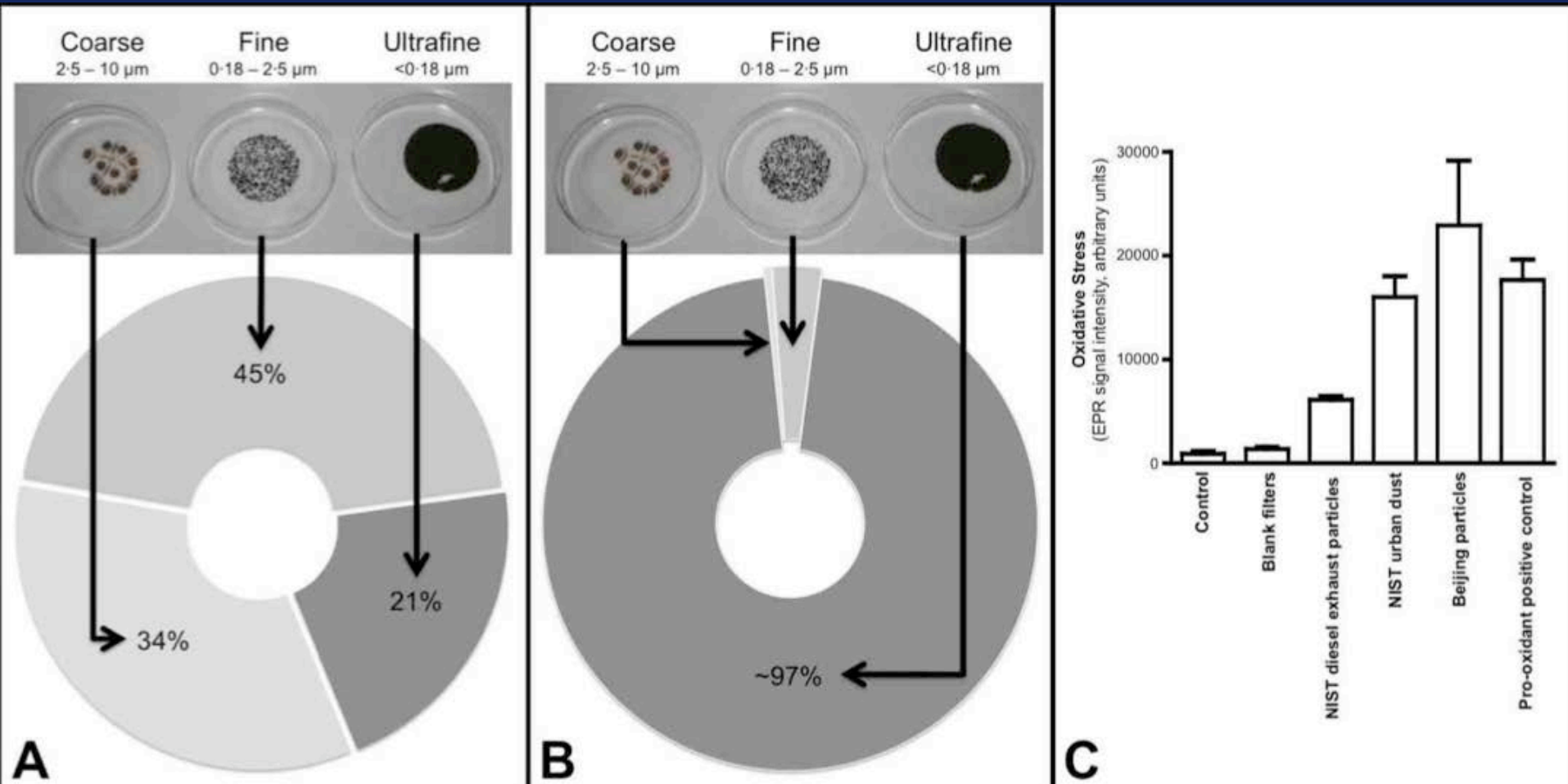
Air Quality in Beijing



"Real-time" PM_{2.5} Concentration
24th July 2008
Beijing City Centre



Air Quality in Beijing





阜外心血管病医院

空气污染研究数据采集过程说明 Air Pollution Study

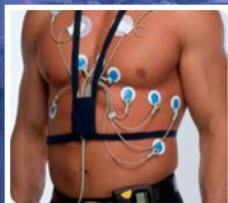


爱丁堡大学

病人在八点到达阜外医院
08:00 - Attend the Fuwai
Hospital

安上心率血压测试仪器
Heart rate and blood
pressure monitors applied

开启空气污染监测仪
Air pollution monitors
applied and switched on



在研究人员的陪同下在市区
内步行两小时
Walk for 2 hours in the city
with researcher

病人可以自由活
动
Free to do own
activities

十八点返回医院
18:00 - Reattend
the Fuwai Hospital

扯掉监控装置
Monitors removed

此次数据采集过程结束
Study complete

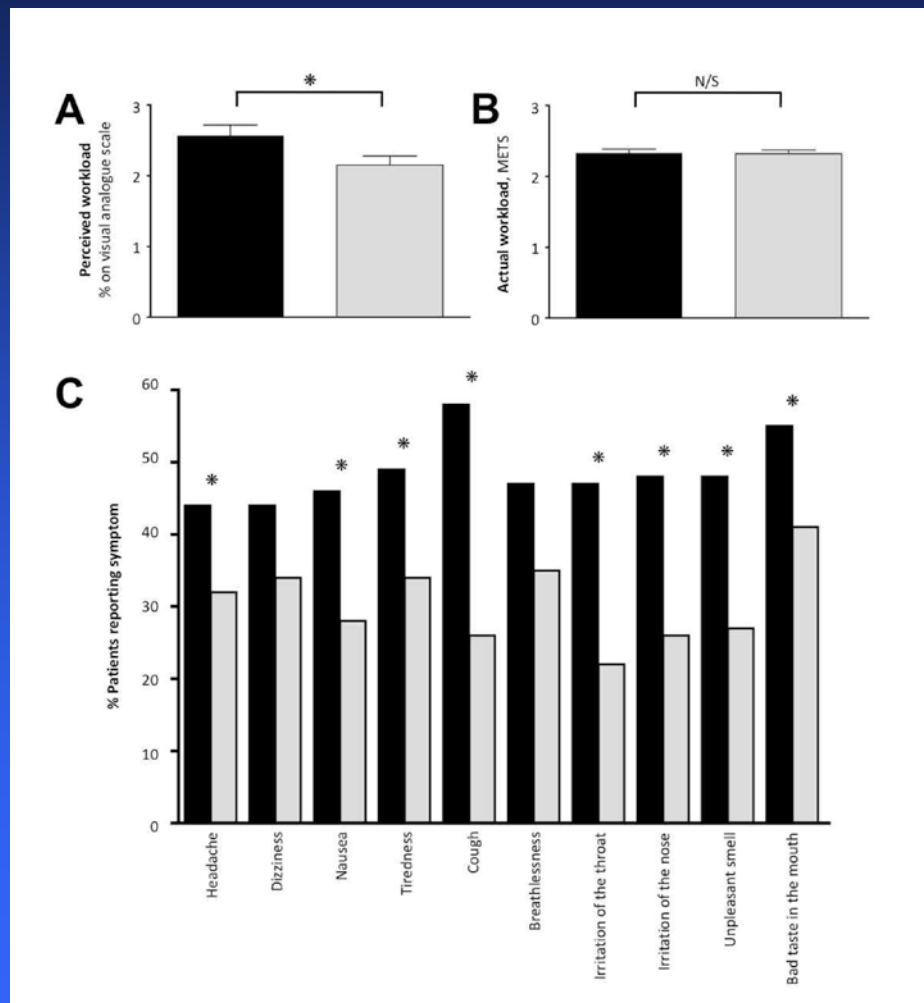
下一次数据采集过程将在奥林匹克运动会之后进行
One more visit to complete after Olympic games

Alternative interventions to reduce exposure: face masks



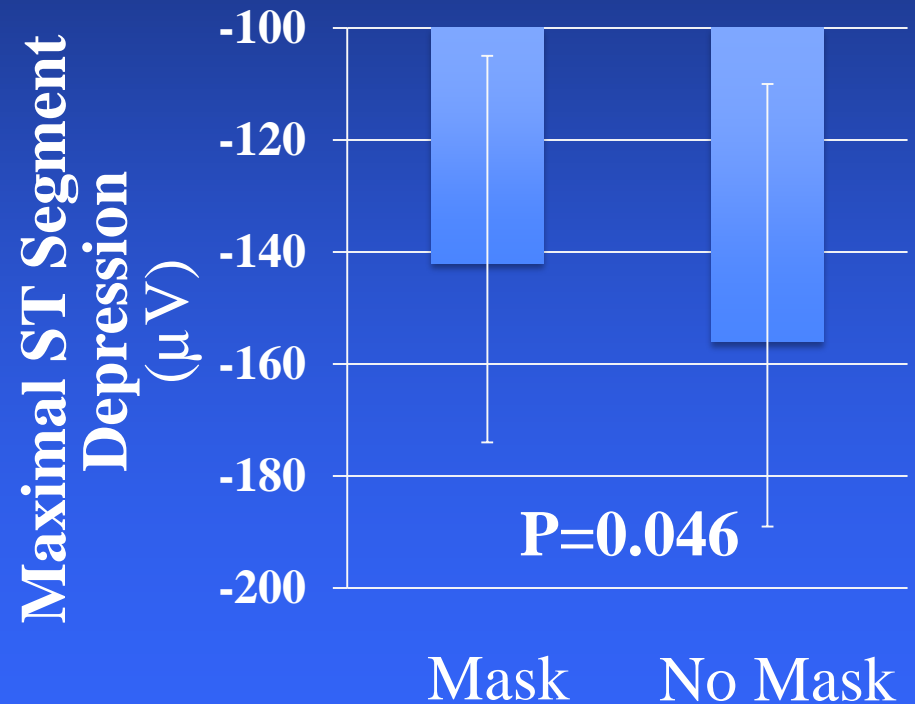
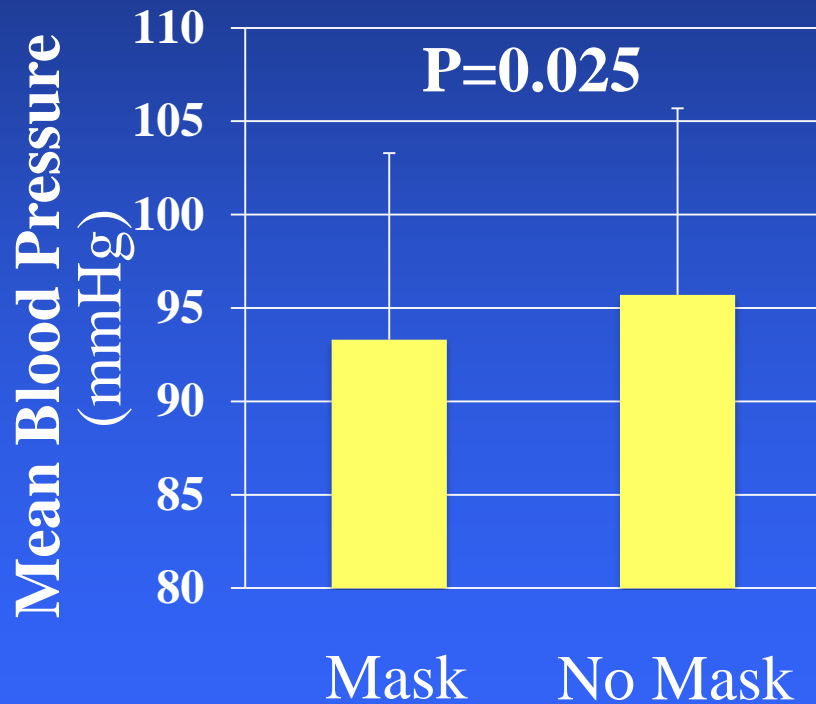
Face Masks

Less Symptoms & Perceived Effort



Face Masks

Reduces Blood Pressure & Silent Ischaemia





No smoking
It is against the law
to smoke in these
premises



The STOPIT Study



Figure 1. Admissions for Acute Coronary Syndrome According to Month before and after Smoke-free Legislation.



Conclusions



- **Environmental air pollution is associated with causing and precipitating heart attacks and strokes**
- **Air pollution causes adverse effects on how the circulation works and functions**
- **Combustion-derived nanoparticulate appears to be the primary mediator of these adverse effects**
- **Strategies to eliminate or reduce particle exposure appear to reduce the harmful effects of air pollution**



Acknowledgments



British Heart Foundation Project Grant: The effects of air pollution on vascular vasomotor and fibrinolytic function in patients with ischaemic heart disease

British Heart Foundation Programme Grant: Atherothrombotic effects of air pollution

Centre for Cardiovascular Science

Nicholas Mills Mark Miller
Simon Robinson Katie Shaw
Nicholas Boon Paddy Hadoke
Keith Fox
Andrew Lucking

RIVM, Netherlands

Flemming Cassee
Paul Fokkens
Daan Leseman



ELEGI

Ken Donaldson Rodger Duffin
William MacNee Simon Brown



University of Glasgow

Jill Pell
Stuart Cobbe



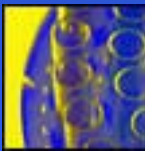
University of Umeå, Sweden

Thomas Sandström
Anders Blomberg
Håkan Törnqvist
Manuel Gonzalez
Stefan Soderberg



Department of Chemistry, Edinburgh

Robert Donovan
Matt Heal
Evelyn Freney



Wellcome Trust CRF, Edinburgh

Kareen Darnley
Sharon Cameron



Mount Sinai, New York, USA

Juan Badimon

