

SUPPORTING CHILDREN AND FAMILIES TO FLOURISH

What more have we learned?

Fiona Crawford, GGC/GCPH
Val McNeice, GCPH



Early years, children and young people: What is needed to support a healthy start in life?

Adequate family income and actions to mitigate impacts of poverty and inequalities

Strong bonds and positive relationships with caregivers and across schools and communities

Nurturing approaches to help children heal from adverse experiences

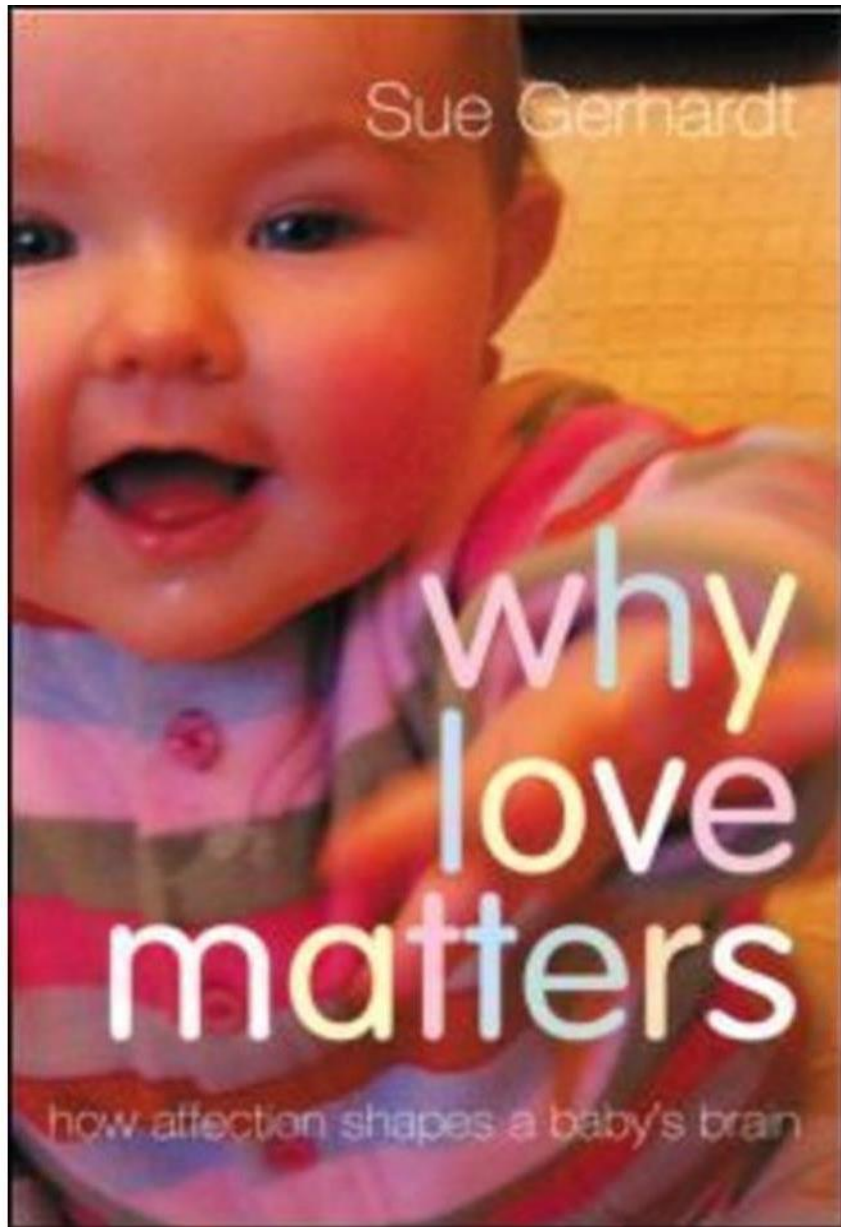
Safe home, school and neighbourhood environments which enable learning and play

Involving children and young people in decisions affecting their lives

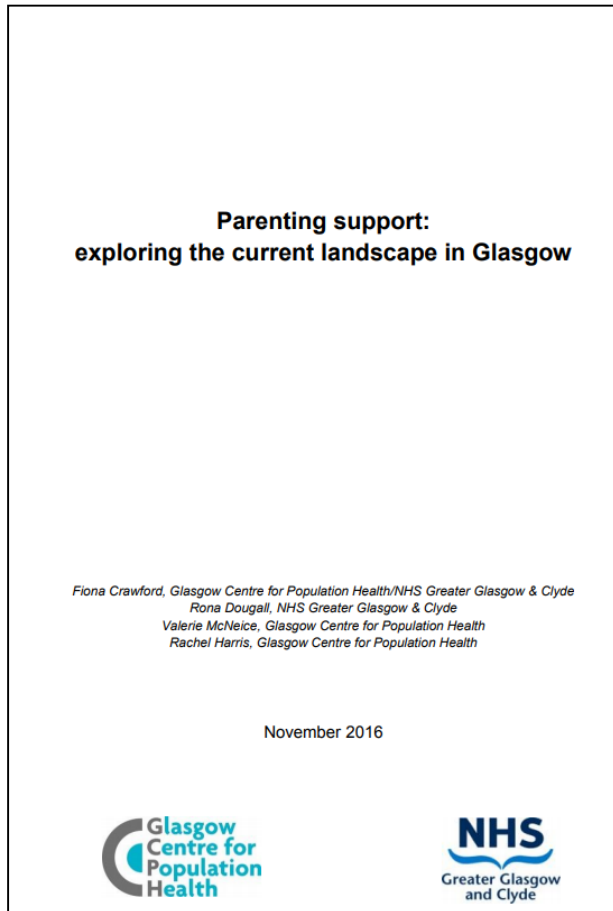


Find out more about this research on our website:

www.gcph.co.uk/publications/658_health_and_early_years_children_and_young_people_a_gcph_synthesis



PREVIOUS RESEARCH

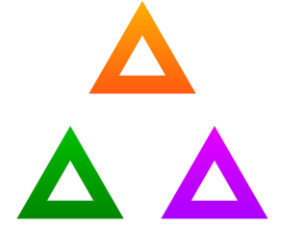


“...there’s no point in even looking at what’s happening for the child until you’ve looked at what’s happening for the parent.”

“.....we got a referral, you need to work on parenting strategies like bedtime routines, so we thought, right, okay, we’ll go in and speak about what are the things that are getting in the way of bedtime routines, and there were no beds, because the family had no money for beds. Carpets, beds, curtains or anything. So we’re going, right, okay.”

“You’ll notice my language has kind of drifted from parenting to family support and that just happens naturally for me. I actually think that’s where we need to be.”

WE WILL COVER...



**Stepping Stones
for Families**

Sustaining Positive Change

Evaluation of Stepping Stones for Families' **Family Wellbeing Service**

Impacts of **CHANGE (Childcare and Nurture Glasgow East)** - a community approach to creating better childcare for families living in the east of Glasgow

The influence of **ACES and child poverty**

Reflections and implications for action



STEPPING STONES EVALUATION



What impact has the Family Wellbeing Service had on

- the parenting skills, resilience, parent/ child and family relationships of parents of pre-school children and families who engage with the Service?
- parental, physical, mental and emotional health and wellbeing?
- the confidence and capacity to learn amongst children of the parents who have engaged with the Service?

Are there particular aspects of the Family Wellbeing Service model or approach that are important to the planned outcomes, and how do they add value?

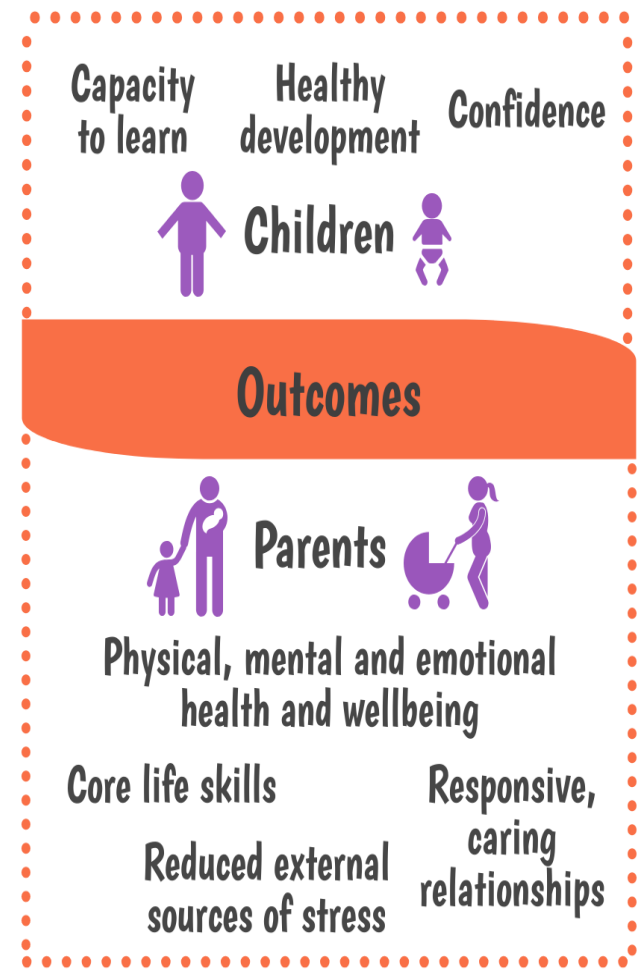
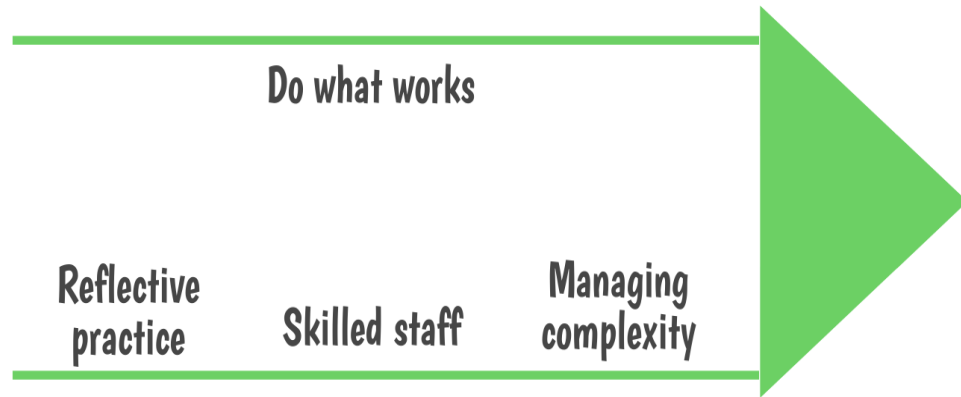
For families who have not taken up the offer of engagement with the Family Wellbeing Service, what are their main reasons?

How has the Family Wellbeing Service involved families in decisions that affect them?

STEPPING STONES EVALUATION

Flexible, responsive approach by FWS workers resulted in:

- Clear positive impacts on parenting skills, resilience, parent/child and family relationships
- Healthier, happier, less stressed/anxious parents
- Improved parental confidence and socialisation
- Reduced risks of child protection measures being employed
- Parents feeling more in control of their lives
- Happier, calmer, healthier children who are more engaged in nursery and in learning



CH

CHANGE is a project working to create better childcare for communities in the East of Glasgow

Understanding the local context

Adequately investing time listening to representatives from every stakeholder area

Childcare is part of the wider offer for children and families, it cannot be considered in isolation

Working with credible partners at an operational and strategic level



Taking the local context and identifying key influencers

Community

Equal time allocation to beneficiaries, implementers and decision makers

Finding and listening to seldom heard voices

Accurate analysis of data on availability of childcare and services

Configuring the existing offer is essential, this model allows this perspective



Experienced practitioners to facilitate participation of children

Engagement

Understanding and acting on the practical barriers to parental engagement

Support for services working with families

Honesty in aims and outcomes with primary intended beneficiaries

Challenging the gap between strategic planning and improving outcomes for families



Critical elements

Relationships

Based on support and empowerment with transparency in values

Growth

Brave plan for expanding childcare services based on evidence of need

Outcomes

Determined by thorough analysis of other critical elements, results in community based solutions

Collaboration

Honest partnership with agreed commitment from outset, cross sectoral and utilising shared methodology

Evaluation

Co-designed theory of change, partner with extensive relevant research experience

Flexibility

Able to accommodate and adjust based on findings from the community engagement process

CHANGE EVALUATION: YEAR ONE

Affordable, flexible,
formal childcare

Increase in number of
establishments and staff

Clear and accessible
information

Drop-off centres for
short-term care



CHANGE EVALUATION: YEAR THREE



Holistic family support

Long-term monitoring
and evaluation of ELC
expansion

Share key learning –
early adopters and
community engagement

Sustainable HUB

Continue to
communicate

LEARNING FROM CHANGE?



Parents/carers welcomed extended hours

“We’ve gelled more as a family; nursery has given us structure. Before, our life was a mad rush, messy, chaotic. But we’ve now got time to sit with the older two and help with their homework, we talk to each other about what we’ve all been doing, its great”. (Parent/Carer)

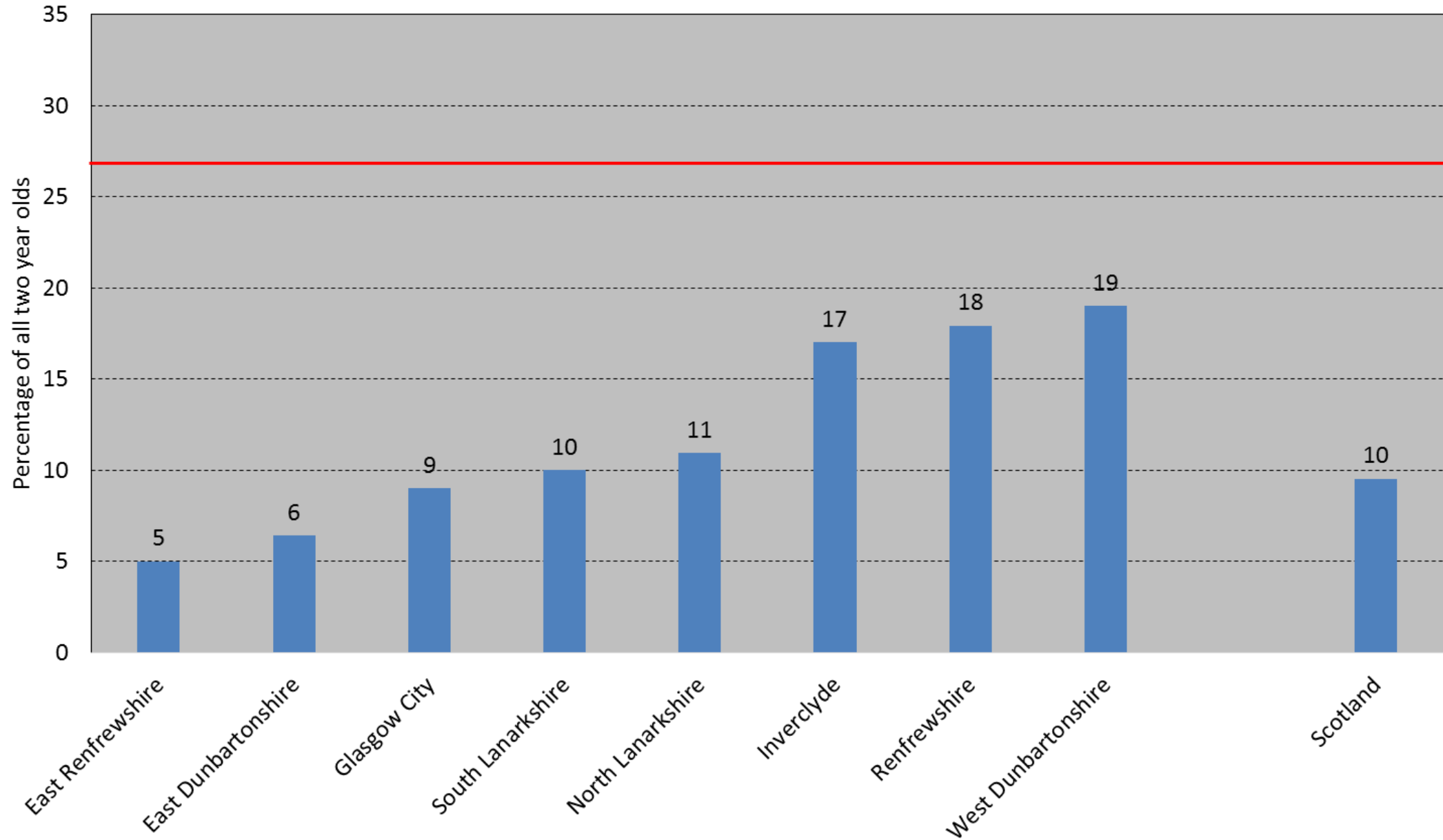
Cost continues to be an issue

The expansion of ELC may be necessary - but it is not sufficient

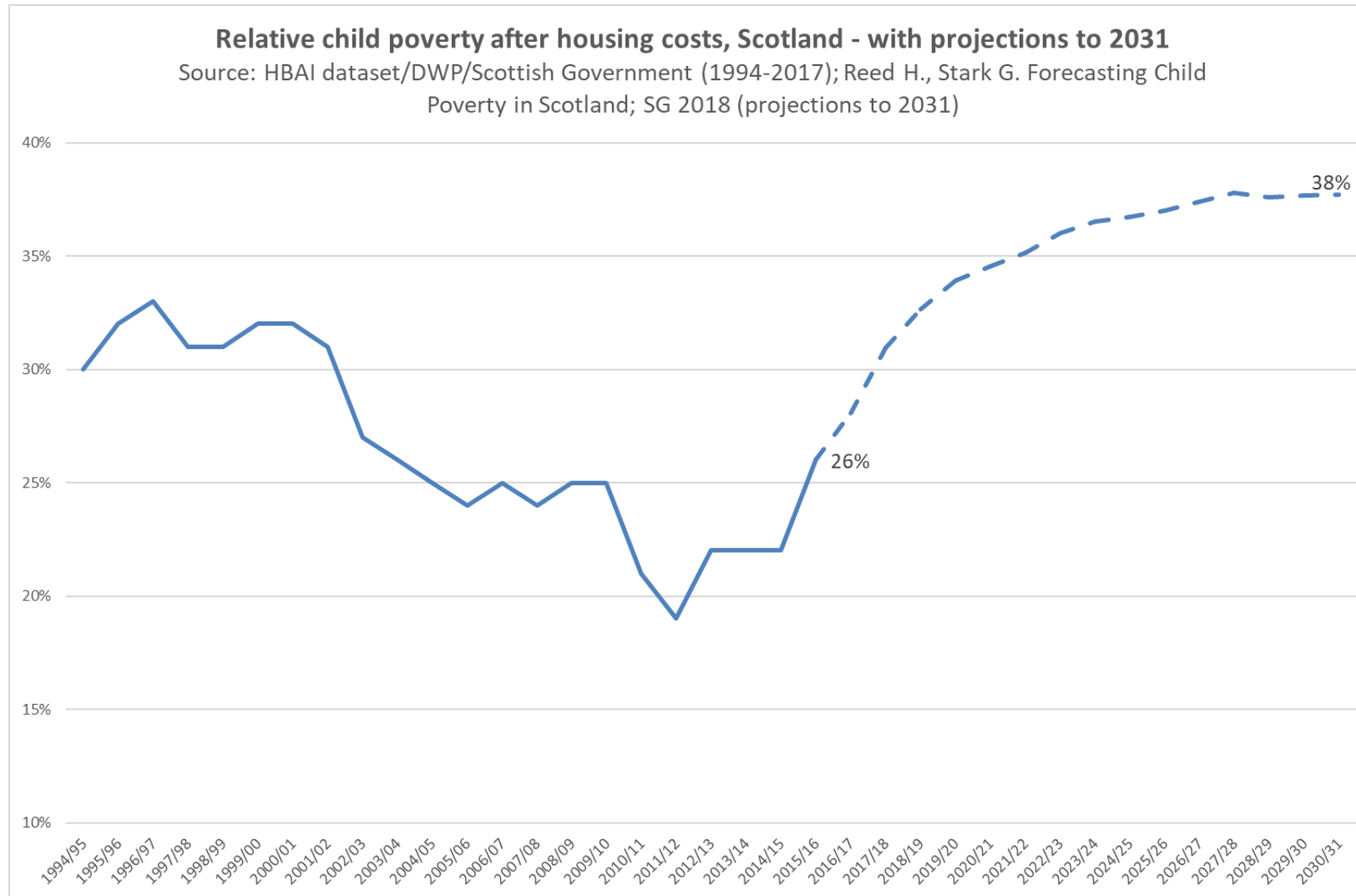
“You can’t just remove the child from it [home environment] and then send them back to the same situation after nursery without doing anything to improve it”. (Staff)

Percentage of two-year olds accessing childcare, 2017

Source: Scottish Government



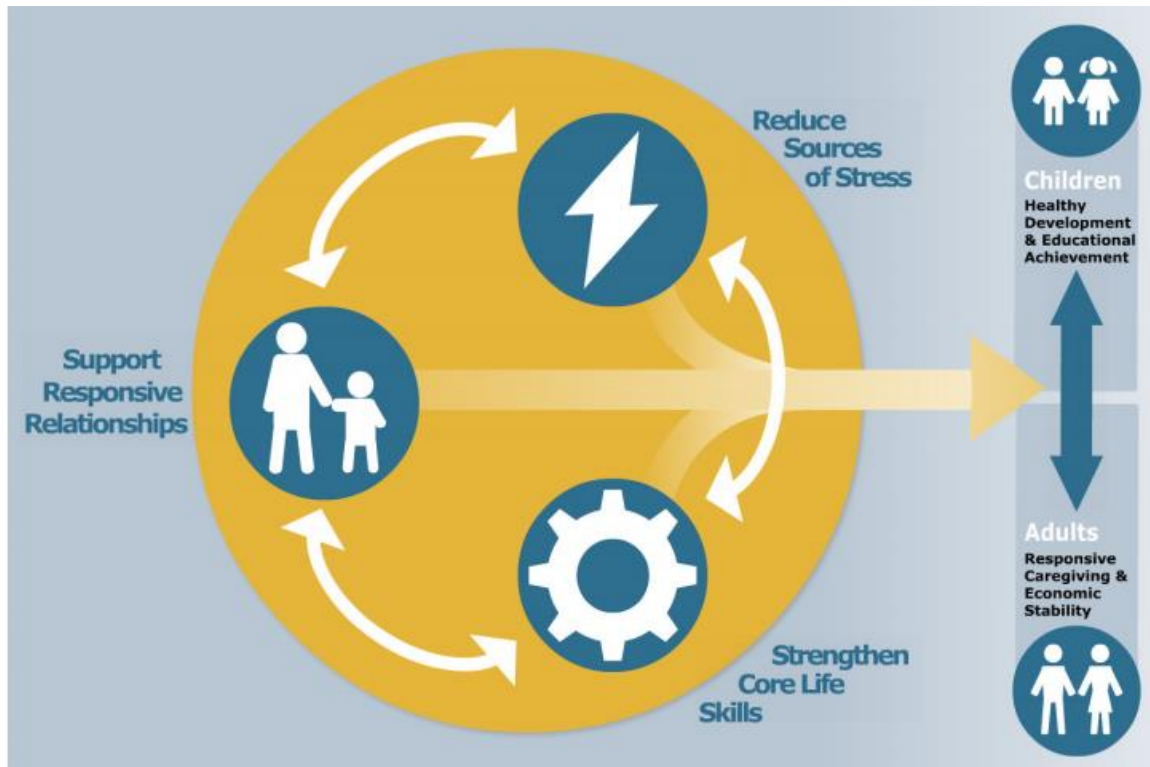
CHILD POVERTY TREND AND PROJECTION



Sources:

- HBAI data set/DWP/Scottish Government.
- Reed H., Stark G. Forecasting Child Poverty in Scotland. Edinburgh: Scottish Government; 2018

REFLECTIONS



Applying the principles in practice....

Offer services through trusted organisations and individuals that have strong local relationships

Routinely ask about and respond to major stressors affecting families

Focus on small incremental steps with frequent feedback

<https://developingchild.harvard.edu/resources/three-early-childhood-development-principles-improve-child-family-outcomes/>

REFLECTIONS



Scottish Riaghaltas gov.scot

PROTECTING SCOTLAND'S FUTURE

The Government's Programme for Scotland 2019-20

A BLUEPRINT FOR 2020: THE EXPANSION OF EARLY LEARNING AND CHILDCARE IN SCOTLAND

2017-18 ACTION PLAN



TheScottishGovernment
@ScotGov
www.gov.scot



EARLY LEARNING AND CHILDCARE THE GLASGOW OFFER

IMPLICATIONS FOR ACTION?

The argument is won.....

Normalising family support – assets rather than deficits

Flexibility/responsiveness in equitably resourced services

Policies across the life-course – tackling ‘rotten life syndrome’

Culture and values – organisational, societal.....

ACKNOWLEDGEMENTS & FURTHER INFORMATION

A BIG thankyou to.....

Stepping Stones for Families, CHANGE Project Team, Nick Hopkins, Judith Harkins

Parents/carers, staff and stakeholders who gave their time and their views so generously

[CHANGE - Childcare and Nurture Glasgow East](#)

[Stepping Stones for Families' Family Wellbeing Service: evaluation](#)

Walsh D., McCartney G., Smith M., Armour G. The relationship between childhood socio-economic position and Adverse Childhood Experiences (ACEs): a systematic review. Journal of Epidemiology & Community Health 2019 (in press)