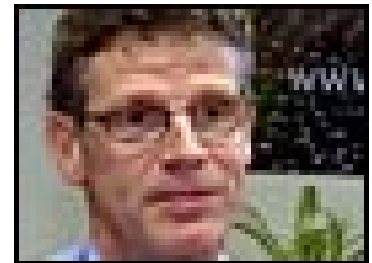


Looking Forward

**Carol Tannahill and
Robert Macintosh**



Learning to live with an angry planet

- All human societies have had a perspective on their relation with nature and the earth.
- This perspective profoundly influences how the society lives.
- 4.5 billion year history of the earth.
- It can be likened to an angry beast. The last thing humans should do is poke it with a stick.

Geoffrey Boulton,
January 2008

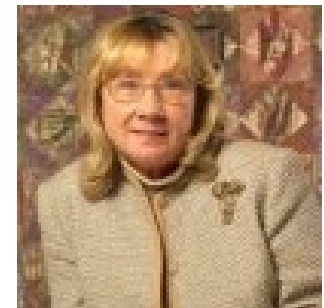


Globalization and its consequences



©2003 R.E.Horn All rights reserved

Maureen O'Hara,
May 2005



**This map
is not
working!**



Transformation of Scotland, 1980-2005

- Changes in the economy, society and culture similar in scale to the 19th century industrial revolution – but have been largely unnoticed or ignored.
- Scale of change has excluded many and seems to have resulted in a more divided Scotland.

Tom Devine,
December 2005



The persistence of health inequalities

- Differential access to resources, networks, prestige etc helps protect those possessing them from the burden of disease and death.
- Helps explain the continuing nature of inequalities in health despite the changing nature of primary causes of illness.
- Get resources to the resource poor and work on improving context for whole population.

Bruce Link,
December 2007



How stress gets under the skin

- Andrew Steptoe
- Bruce McEwen
- Liz Gould
- Harry Burns
- Michael Meanie
- Peter Gianoros
- Jonathan Seckl
- Rachel Yehuda
- Biological consequences of social stresses
- Psychobiological processes
- Allostatic load
- Early years effects
- Effects small, but cumulative and multiple
- Control, social support, physical activity

Why selfish capitalism causes increased mental illness

- Selfish capitalism: the system characteristics that lead to Affluenza (over-emphasis on the material aspects of life)
- Too strong a focus on materialism interferes with the meeting of fundamental psychological needs

Oliver James,
June 2008



Scots Miserabilism

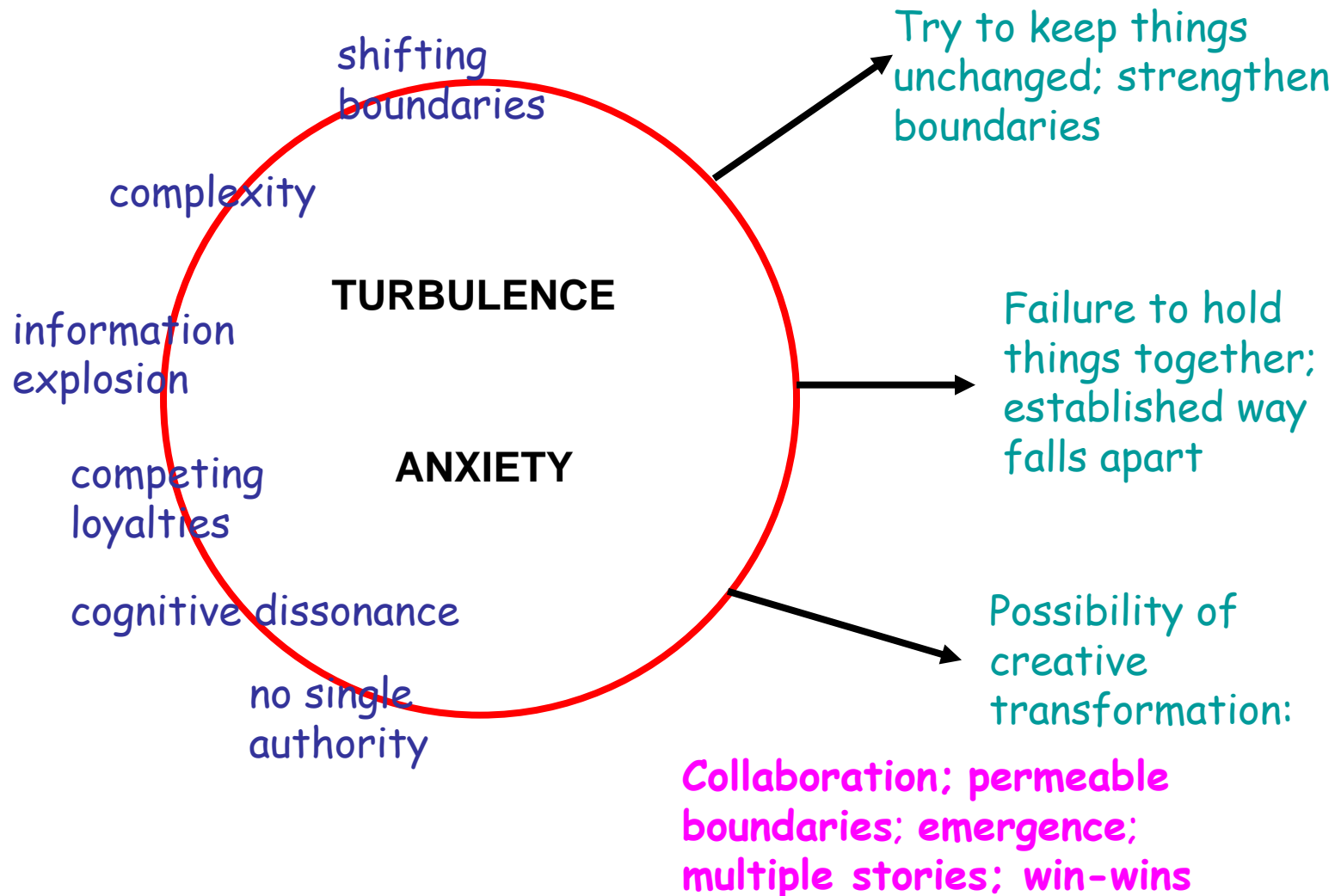
- Trainspotting: addiction as the only outcome for many men
- Whisky Galore, Brigadoon, Braveheart etc: Sugar coated alternatives; community works well
- But Miserabilism has become a commodity – sells well
- Need for ‘hope’ to be reflected in life and film

Eleanor Yule,
February 2010



Finding the transformative response

(after Maureen O'Hara, GCPH 2005)



Collaboration: The city as a complex adaptive system

- Informal networked forms of knowledge and organisation work better than more formal bureaucratic forms in navigating complex adaptive systems – distributed decision-making
- 3 forms of knowledge: experiential, narrative, abstract symbolic
- Boundary objects enable order to be created in uncertain circumstances

Max Boisot,
November 2010



- Order and chaos are both significant aspects of the world. We continue to pursue the belief that ‘if only we had all the info, we could figure everything out’; yet we also know there are lots of non-forecastable phenomena.

Sholom Glauber
February 2005



Multiple stories and methods

- A paternalistic approach is neither acceptable nor likely to be effective:
 - civic conversation
 - wisdom circles (Manfred Helrigl)
 - use of creative imagination (Irene McAra McWilliam)
 - positive deviance (Sternin)

AC Grayling,
November 2004



Some 'win-wins'?

- Bouncing back, and bouncing beyond: a focus on assets and resilience
- Emphasising the 'social'
 - Materialism is a weaker influence on happiness than is social connection (Layard, Offer)
 - Social support reduces allostatic load (McEwen)
 - Urban development can impair social health (Frumkin)

Strategy # 13: Make everything car-accessible.





Fine

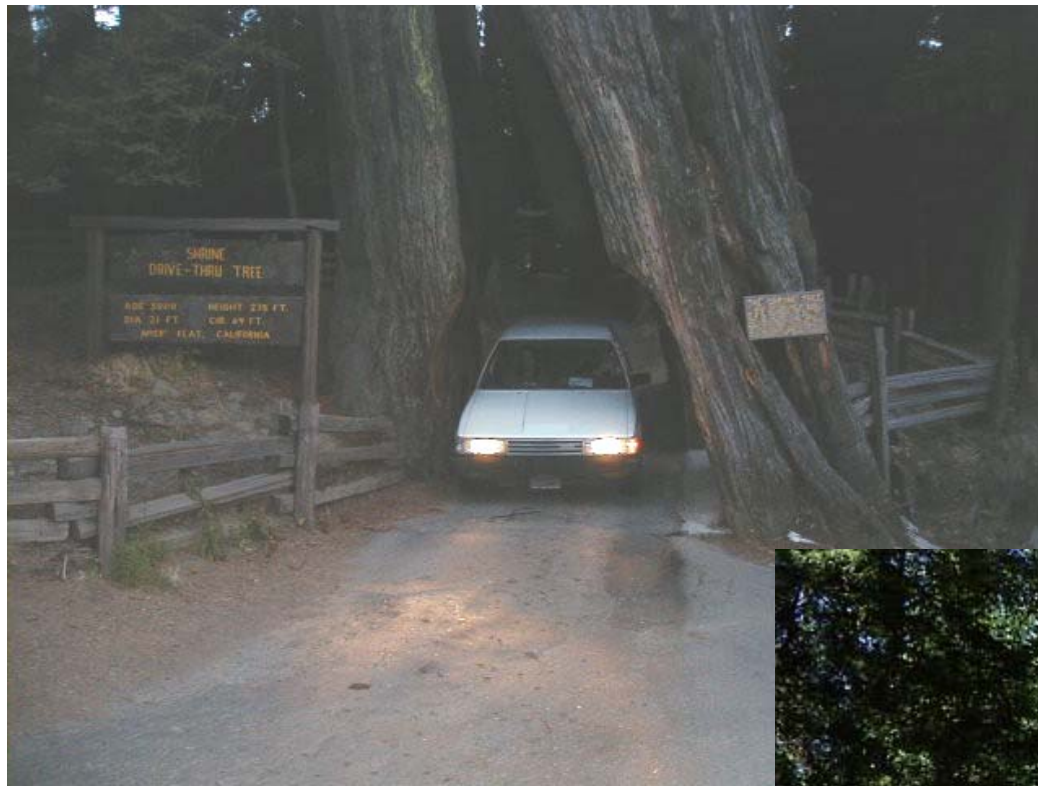


Food





Coffee



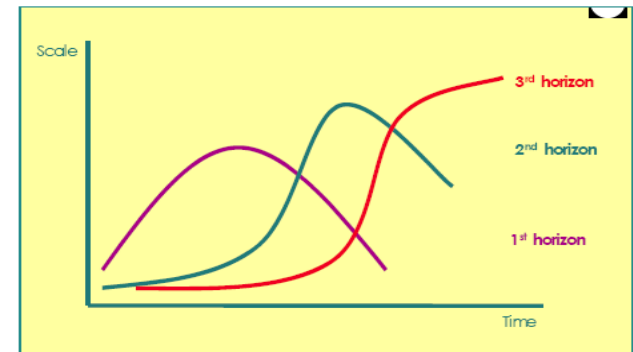
Trees

Drive-Thru Wedding Chapel Las Vegas, NV



Long standing issues: new responses

- Three horizon thinking – supporting the third horizon in the present



- Addressing established priorities

Jeffrey Wigand,
March 2007



(Re)making the Strategy

Prof. Robert Macintosh

Glasgow's Health:

an embedded, resilient and complex
problem

Uniquely Placed

NHS GG&C

U of G

GCC

**Scottish
Government**

Uniquely Placed

**NHS
GG&C**

U of G

GCC

**Scottish
Government**

Q. Boundaries ?

Uniquely Placed

**NHS
GG&C**

U of G

GCC

**Scottish
Government**

Q. Boundaries ? Q. Governance ?

Uniquely Placed

**NHS
GG&C**

U of G

GCC

**Scottish
Government**

Q. Boundaries ? Q. Governance ? **Q Remit ?**

Purpose

Our mission is to generate insights and evidence, support new approaches, and inform and influence action to improve the city's health and tackle inequality.

Purpose

Our mission is **to generate insights and evidence**, support new approaches, and inform and influence action to improve the city's health and tackle inequality.

Purpose

Our mission is to generate insights and evidence, **support new approaches**, and inform and influence action to improve the city's health and tackle inequality.

Purpose

Our mission is to generate insights and evidence, support new approaches, and **inform and influence** action to improve the city's health and tackle inequality.

Purpose

Our mission is to generate insights and evidence, support new approaches, and inform and influence action **to improve the city's health and tackle inequality.**

Purpose

Our mission is to generate insights and evidence, support new approaches, and inform and influence action to improve the city's health and tackle inequality.

... this implies partnership

Guiding Principles

1. Taking a long-term view
2. Being evidence-centred and ethical
3. Using creative approaches
4. Being collaborative yet challenging
5. Attending to capacity and context

A Unique Contribution

The Centre seeks to act as a critical friend to those shaping efforts to improve Glasgow's health and reduce health inequalities.

A Unique Contribution

The Centre seeks to act as **a critical friend** to those shaping efforts to improve Glasgow's health and reduce health inequalities.

A Unique Contribution

Engaged with the best ideas globally.

Working on the problem from local, national and international perspectives.

Recognised centre of excellence.

