

Mark McAllister

New South Glasgow Hospitals

Closure of the Western Infirmary

Transfer of Emergency and related services to the new SGH

New Stobhill Hospital

Outpatients, investigations, imaging, day surgery, day case, treatments for the North East

Gartnavel

Acute receiving for West Glasgow
Oncology Centre, Ambulatory care and elective inpatient surgery

Glasgow Royal Infirmary

A&E/Trauma
Full range of acute hospital services for N&E Glasgow

New SGH

A&E/Trauma
Full range of acute hospital services for South & West Glasgow
Children's Hospital

New Victoria Hospital

Outpatients, investigations, imaging, day surgery, day case, treatments for South Glasgow

WEST GLASGOW CHCP

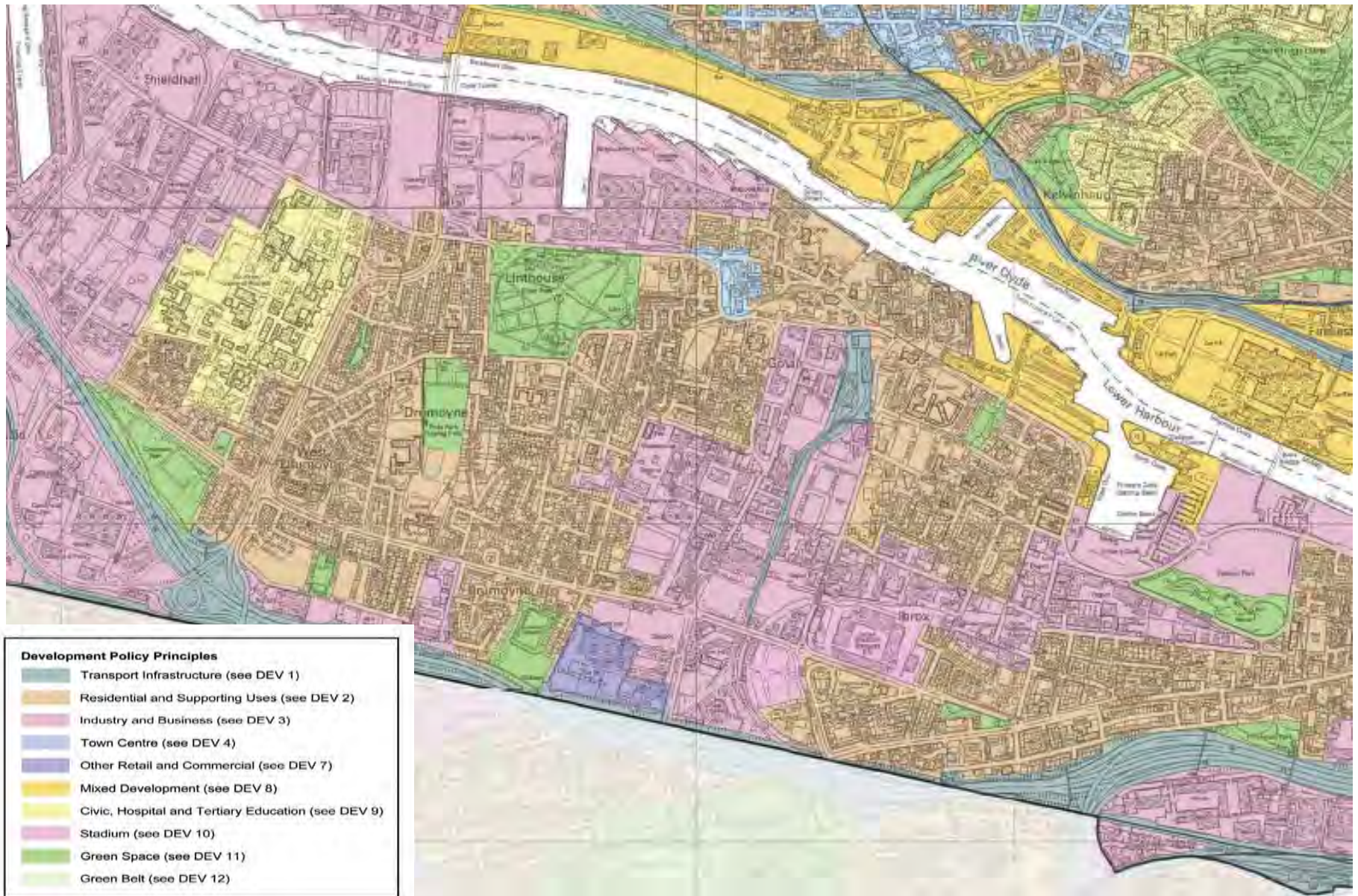
NORTH GLASGOW CHCP

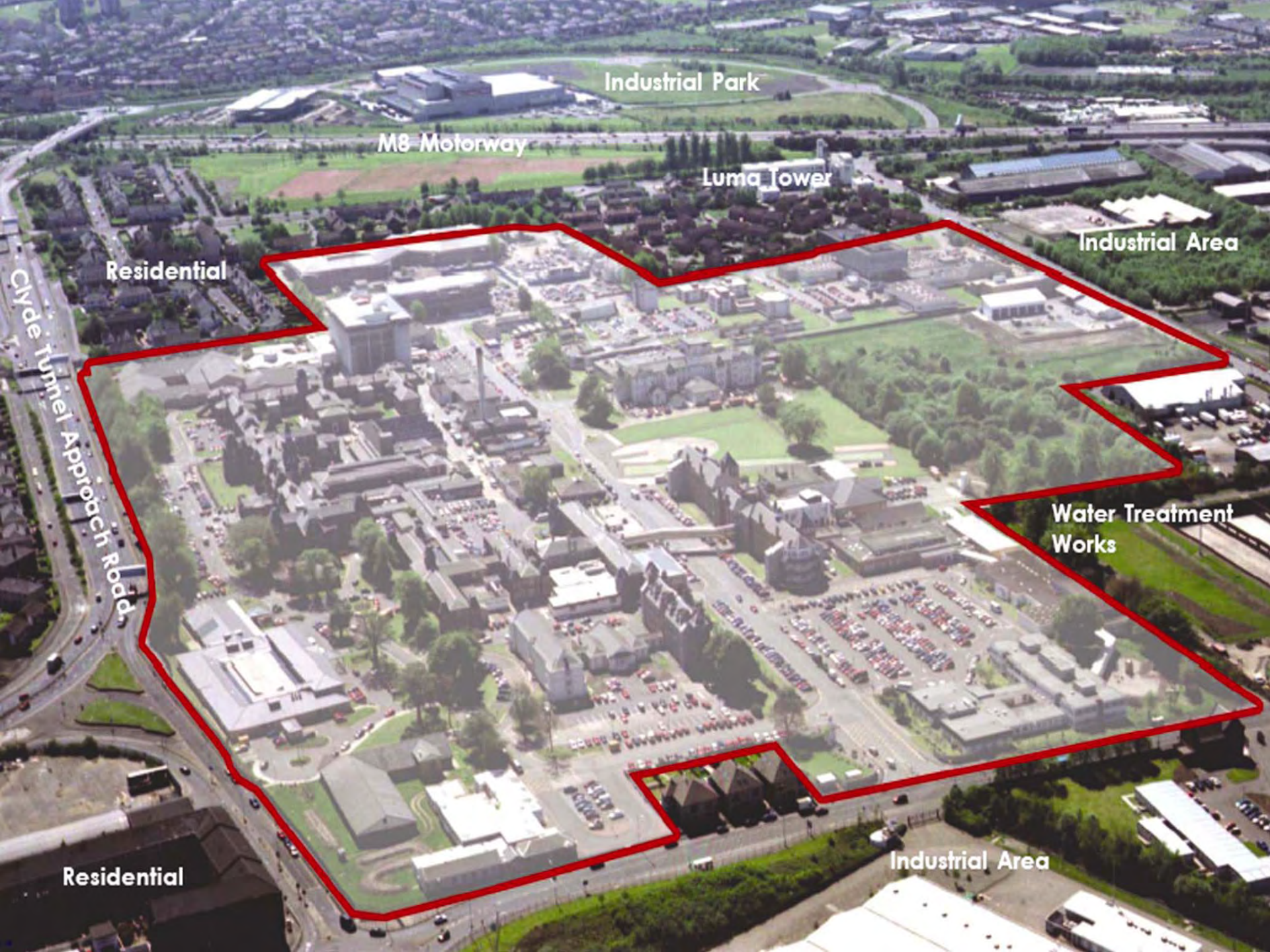
SOUTH WEST GLASGOW CHCP

SOUTH EAST GLASGOW CHCP

EAST GLASGOW CHCP







Industrial Park

M8 Motorway

Luma Tower

Industrial Area

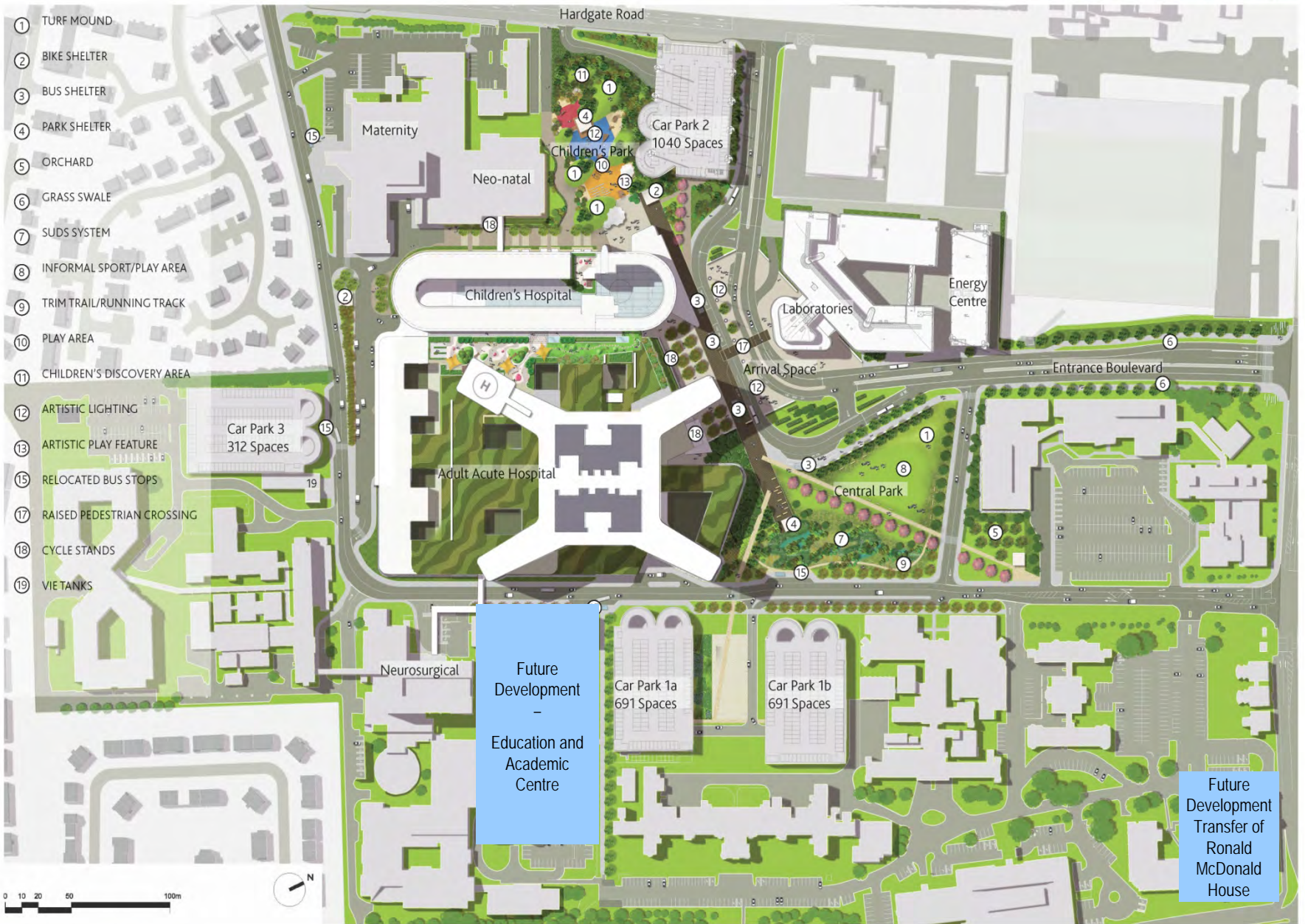
Residential

Water Treatment Works

Cyde Tunnel Approach Road

Residential

Industrial Area

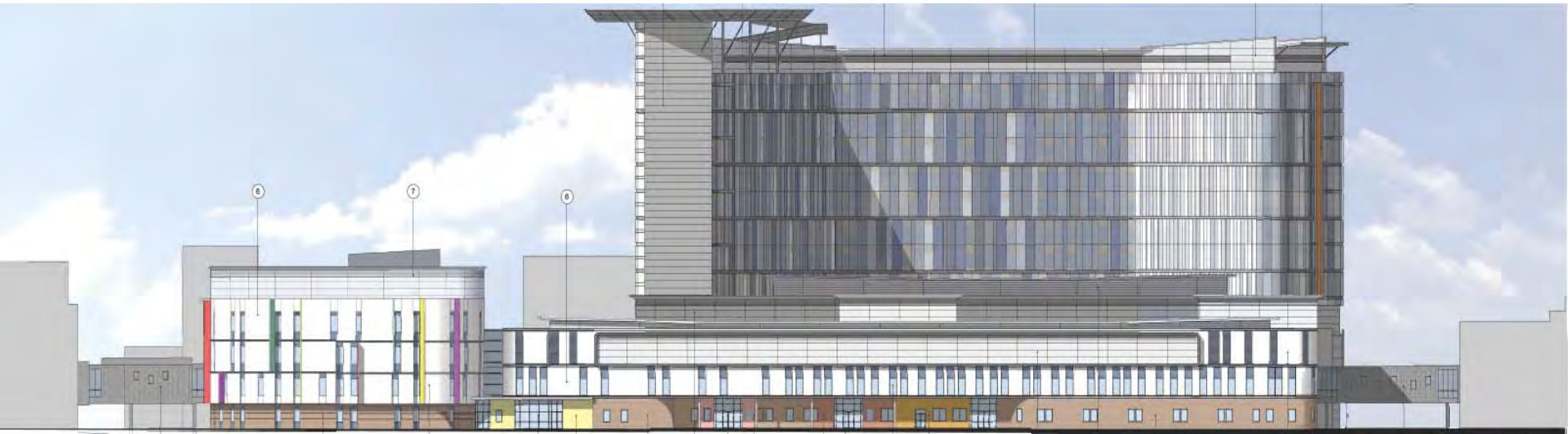








North Elevation



South Elevation

View of the main entrance to the Adult Hospital





Impact of NSGH in South West Glasgow

Independent analysis to quantify impact of investment - jointly funded by partners

NSGH development is seen as a catalyst/ driver for regeneration activity in South West Glasgow

Direct /Indirect Economic Impact of £30 - £40 million pa in South West Glasgow

Employment - net gain for South West Economy in the long term. Currently 20% (approx 800) of workforce reside in G51/ G52. If 20% ratio maintained in future = approx 2000

Realisation of life science/ bio-medical potential and growth of new industries requiring a skilled workforce

If impact is to be maximised - need to ensure future skills and workforce needs are available in South West Glasgow

Impact can only be delivered in partnership

Why focus on South West Glasgow?

Scale of NHS investment in South West is a real catalyst for change, driving innovation, integration and collaboration

Well established/ robust partnership structures in place to support joint working

NHSGG&C committed to work in partnership and support broader social, economic and regeneration objectives

Recognition that regeneration effort needs to focus on people as well as place, connecting communities to opportunities

Opportunity to 'road test' new ways of working to support closer collaboration across Greater Glasgow and Clyde

Maximising impact of NHSGG&C investment by retaining economic benefit in the local community

Making it happen...

Raising aspirations - a sustained programme of activities with schools to communicate future opportunities for young people presented by the NSGH

Recruitment planning - the development of an integrated plan to support local recruitment to non-professional posts

Education pathway - development of an integrated plan to support progression to professional qualifications

Readiness for work: the development of a readiness for work programme focused on the opportunities offered by the NSGH for those presently far from the labour market

Skills and training: improved linkages with NHS workforce development function for FE colleges to develop a shared action plan to address needs and opportunities of mutual interest

South West Glasgow Profile

Prosperity - Poverty									
Prosperity - Poverty	'Income deprived'	28,121	24.3	%					+75
	'Employment deprived'	14,440	19.8	%					+54
	Workless	17,620	23.5	%					+60
	JSA - Unemployment	2,920	3.9	%					+40
	Households without access to car/van	28,573	54.7	%					+60
	Children in workless households	8,979	34.9	%					+90
	Social grade E - benefit, unemployed, lowest grade work	31,035	34.3	%					+53
	Workplaces	2,844	39.0	ci3					-28
	Employees ⁵	52,800	72.3	ci					-3
Education	Primary school attendance	-	93.7	%					-1
	S4 Pupils with 5+ GCSE equivalents	636	46.5	%					-19
	Adults without qualifications	36,613	44.0	%					+32





Supplier Development Programme
Improving business procurement
Let's talk business!
www.sdproofad.co.uk

...ip.com
Tel: 01506 657777

Brookfield
www.brookfield.co.uk
aspire

aspire
at CMAA

Informational brochures and materials on a table in the foreground.

Informational brochures and materials on a table in the foreground.

