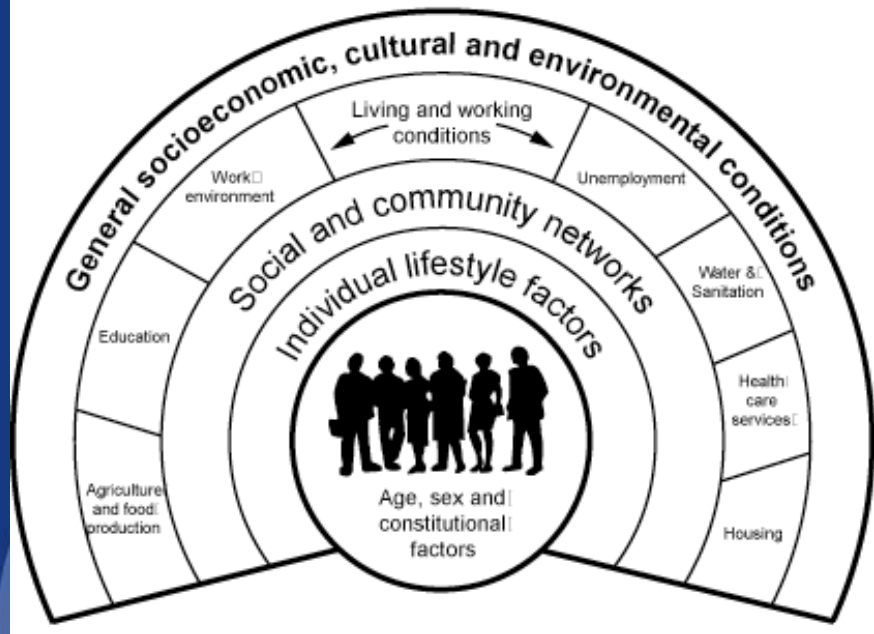
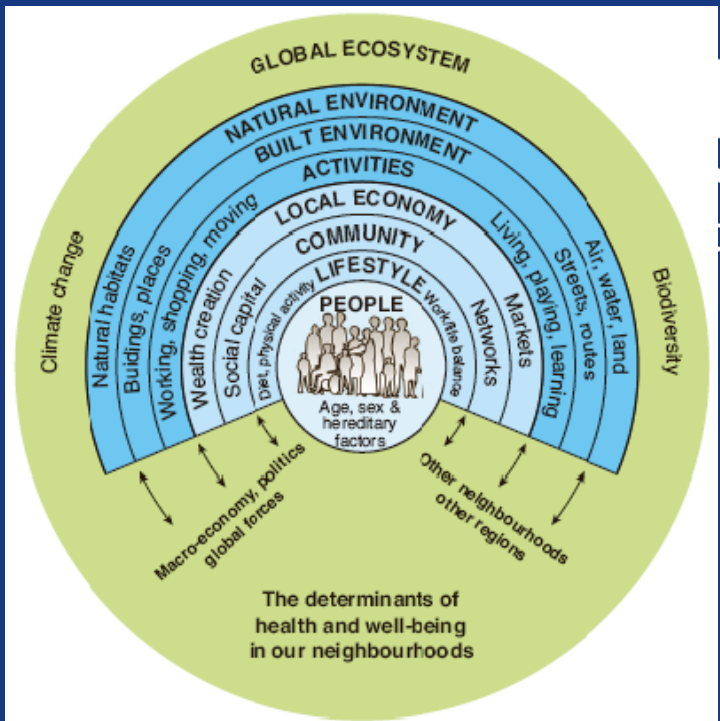
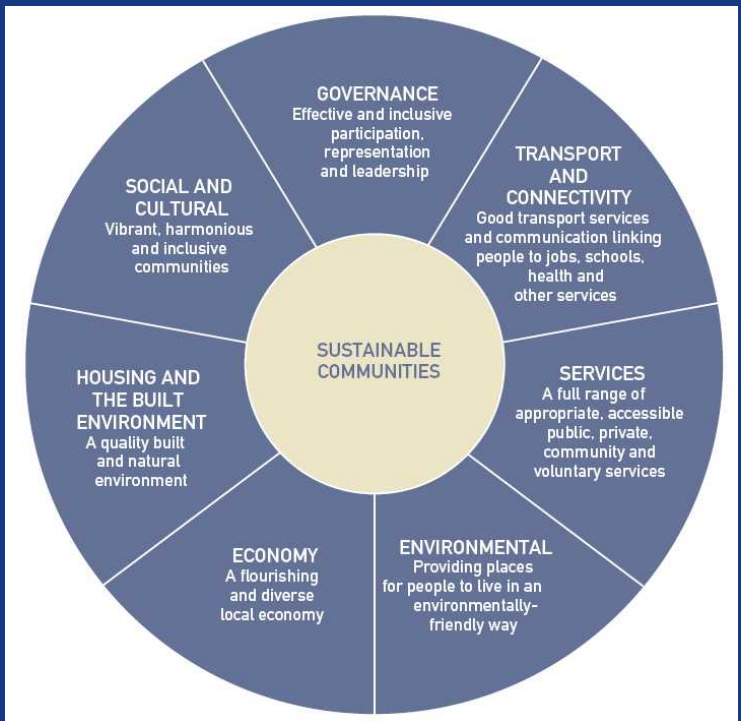
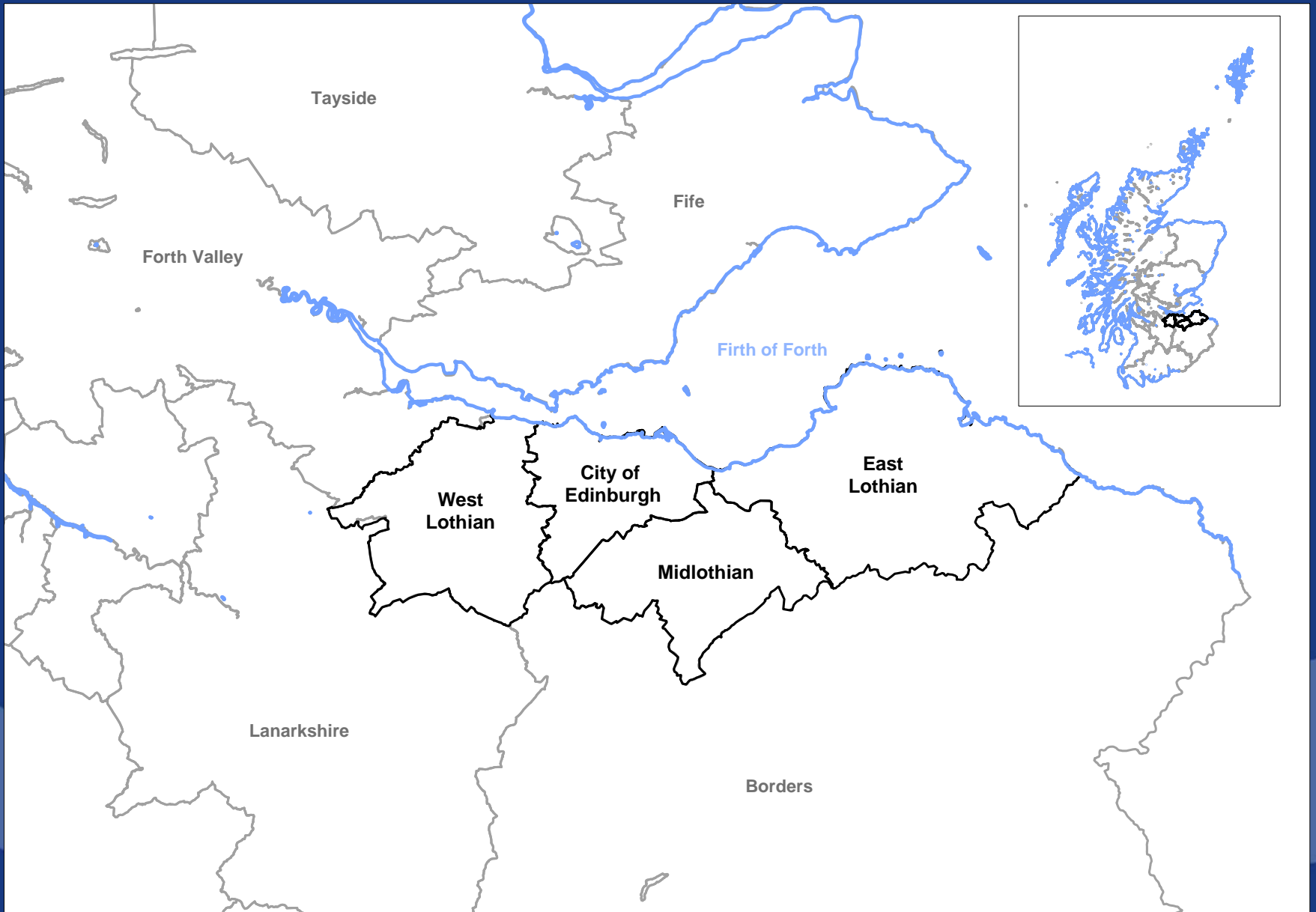


HIA, HSN and Pennywell

Martin Higgins









Housing regeneration

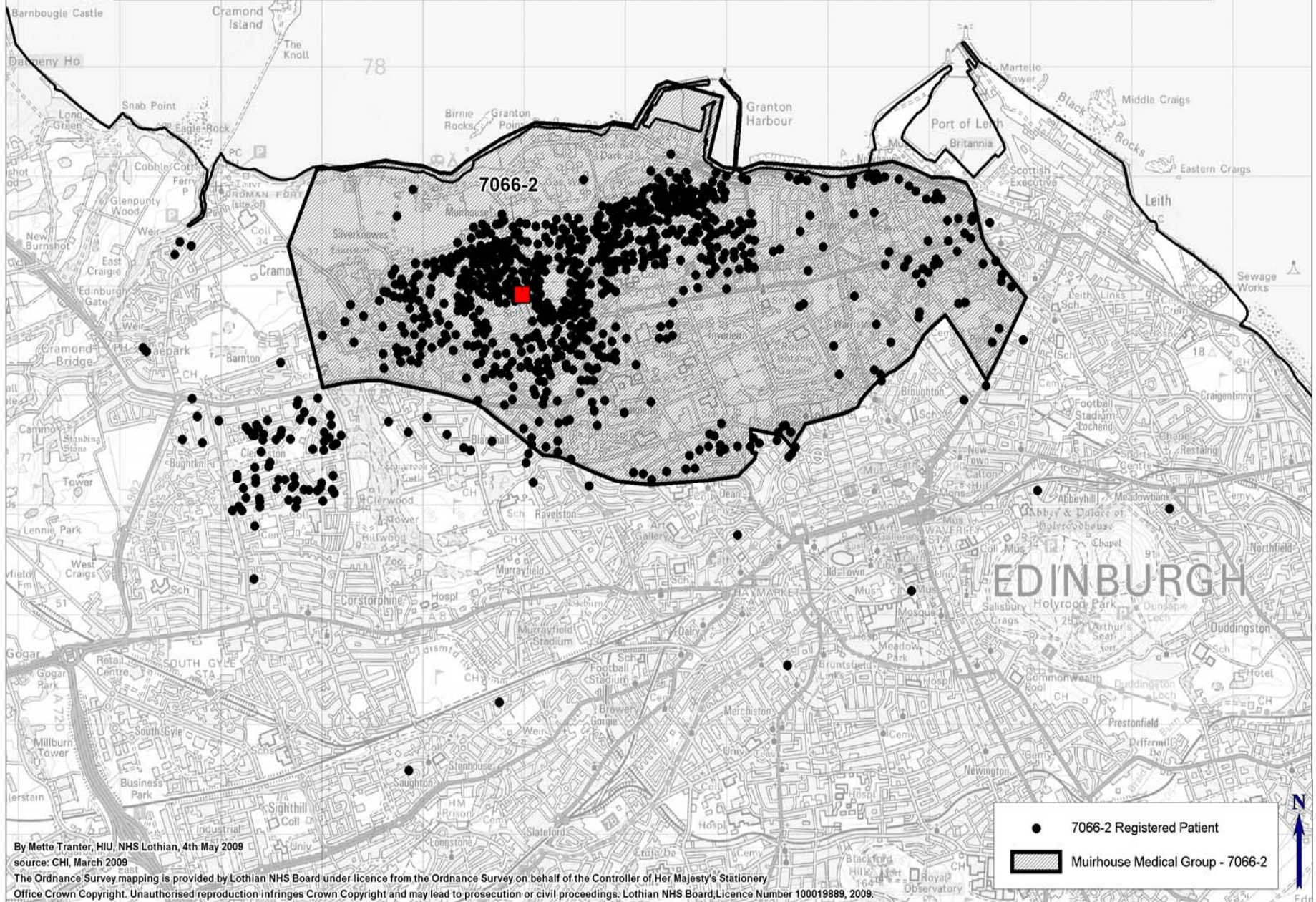


- 21st Century Homes investment will affect approximately 535 homes in Pennywell. Outline planning applications due this week. CEC planning suggested an HIA.

Indicator	Pennywell	Greater Pennywell	Edinburgh	Scotland
% owner occupation, 2001	8.24	33.61	68.57	62.59
% social renting, 2001		59.79	17.91	29.41
% dwellings in Council Tax Bands A-C		83.54	48.42	62.38
Total number of dwellings/hectare, 2008	94.44 (?)	16.39	8.72	0.32
Mean house price sale, 2008		£154,049	£222,857	£165,214



GP Practice Boundary and Registered Patients for Muirhouse Medical Group



By Mette Tranter, HIU, NHS Lothian, 4th May 2009

source: CHI, March 2009

The Ordnance Survey mapping is provided by Lothian NHS Board under licence from the Ordnance Survey on behalf of the Controller of Her Majesty's Stationery

Office Crown Copyright. Unauthorised reproduction infringes Crown Copyright and may lead to prosecution or civil proceedings. Lothian NHS Board; Licence Number 100019889, 2009.

Who lives there?

Indicator	Greater Pennywell	Forth Neighbourhood Partnership	Edinburgh	Scotland
Population	12,133	29,412	471,650	5,168,500
Total % children	21.54	21.7	14.93	17.68
Total % working age	66.65		68.01	62.65
Total % pensionable age	11.81	14.6	17.06	19.68

Where do people live now?



Indicator	Pennywell	Greater Pennywell	Edinburgh	Scotland
% owner occupation, 2001	8.24	33.61	68.57	62.59
% social renting, 2001		59.79	17.91	29.41
% dwellings in Council Tax Bands A-C		83.54	48.42	62.38
Total number of dwellings/hectare, 2008	94.44 (?)	16.39	8.72	0.32
Mean house price sale, 2008		£154,049	£222,857	£165,214

Mother and child health



Indicator	Greater Pennywell	North Edinburgh	Edinburgh	Scotland
% of women smoking at booking, 2005-2007	26.8		11.8	20.8
low weight live singleton birth rate/1,000 live singleton births, 2005 - 2007	39.22	49.4	24.13	24.13
% of children breastfeeding at 6-8 week review, 2008	32.14	30.23	57.84	36.13

Substance misuse and mental health problems



Indicator	Greater Pennywell	Edinburgh	Scotland
Hospital admissions for alcohol misuse/100,000, 2001-2004	1579.3	671.10	722.66
Hospital admissions for drugs misuse/100,000, 2001-2004	562.4	173.06	127.46
Estimated percentage of population prescribed drugs for anxiety, depression or psychosis, 2004	11.53	6.98	8.20

HIA screening and scoping

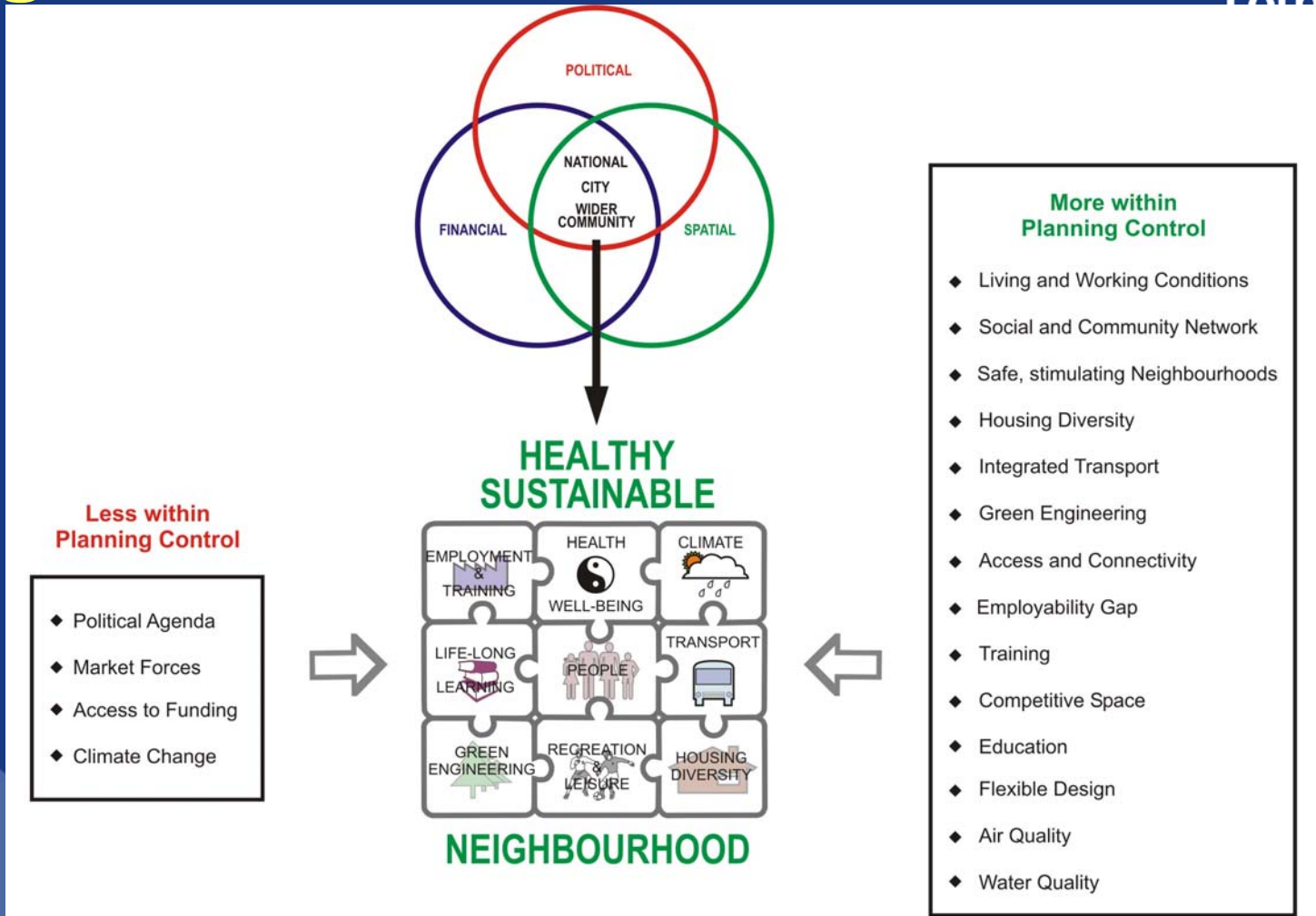
- Who is affected? How? Why?
- What are the pathways to health impacts?
- What research do we need?

HIA checklists



<p>Which groups of the population do you think will be affected by this proposal?</p> <p>minority ethnic people (incl. gypsy/travellers, refugees & asylum seekers)</p> <p>women and men</p> <p>people in religious/faith groups</p> <p>people with disabilities</p> <p>older people, children and young people</p> <p>lesbian, gay, bisexual and transgender people</p>	<p>Other groups:</p> <ul style="list-style-type: none"> • people of low income • people with mental health problems • homeless people • people involved in criminal justice system • staff
<p>The word proposal is used below as shorthand for any policy, procedure, strategy or proposal that might be assessed.)</p>	<p>What positive and negative impacts do you think there may be? Are there any impacts about which you feel uncertain? Which groups will be affected by these impacts?</p>
<p>What impact will the proposal have on lifestyles?</p> <p>Diet and nutrition</p> <p>Exercise and physical activity</p> <p>Substance use: tobacco, alcohol or drugs</p> <p>Risk taking behaviour</p> <p>Education and learning, or skills</p>	
<p>What impact will the proposal have on the social environment?</p> <p>Social status</p> <p>Employment (paid or unpaid)</p> <p>Social/family support</p> <p>Stress</p> <p>Income</p>	
<p>What impact will the proposal have on equality?</p> <p>Discrimination</p> <p>Equality of opportunity</p> <p>Relations between groups</p>	
<p>What impact will the proposal have on the physical environment?</p> <p>Living conditions</p> <p>Working conditions</p> <p>Pollution or climate change</p> <p>Accidental injuries or public safety</p> <p>Transmission of infectious disease</p>	
<p>How will the proposal impact on access to and quality of services?</p> <p>Health care</p> <p>Transport</p> <p>Social services</p> <p>Housing services</p> <p>Education</p> <p>Leisure</p>	

Healthy Sustainable Neighbourhoods Model



Less within Planning Control

- ◆ Political Agenda
- ◆ Market Forces
- ◆ Access to Funding
- ◆ Climate Change

More within Planning Control

- ◆ Living and Working Conditions
- ◆ Social and Community Network
- ◆ Safe, stimulating Neighbourhoods
- ◆ Housing Diversity
- ◆ Integrated Transport
- ◆ Green Engineering
- ◆ Access and Connectivity
- ◆ Employability Gap
- ◆ Training
- ◆ Competitive Space
- ◆ Education
- ◆ Flexible Design
- ◆ Air Quality
- ◆ Water Quality

Stakeholder workshop

People

- Enhancing social status and social inclusion
- Addressing discrimination and promoting equality of opportunity
- Community participation and control

Employment, training and lifelong learning

- Providing employment and training
- Ensuring financial inclusion
- Lifelong learning for all

Health and Wellbeing

- Lifestyle: physical activity, food, substance use, sexual health
- Stress and resilience

Climate

- Pollution: air/water/soil
- Sustainable building techniques

Stakeholder workshop

Transport

- Encouraging walking and cycling
- Connections to services/between communities

Services

- Health and social care
- Leisure and recreation
- Other services

Green engineering

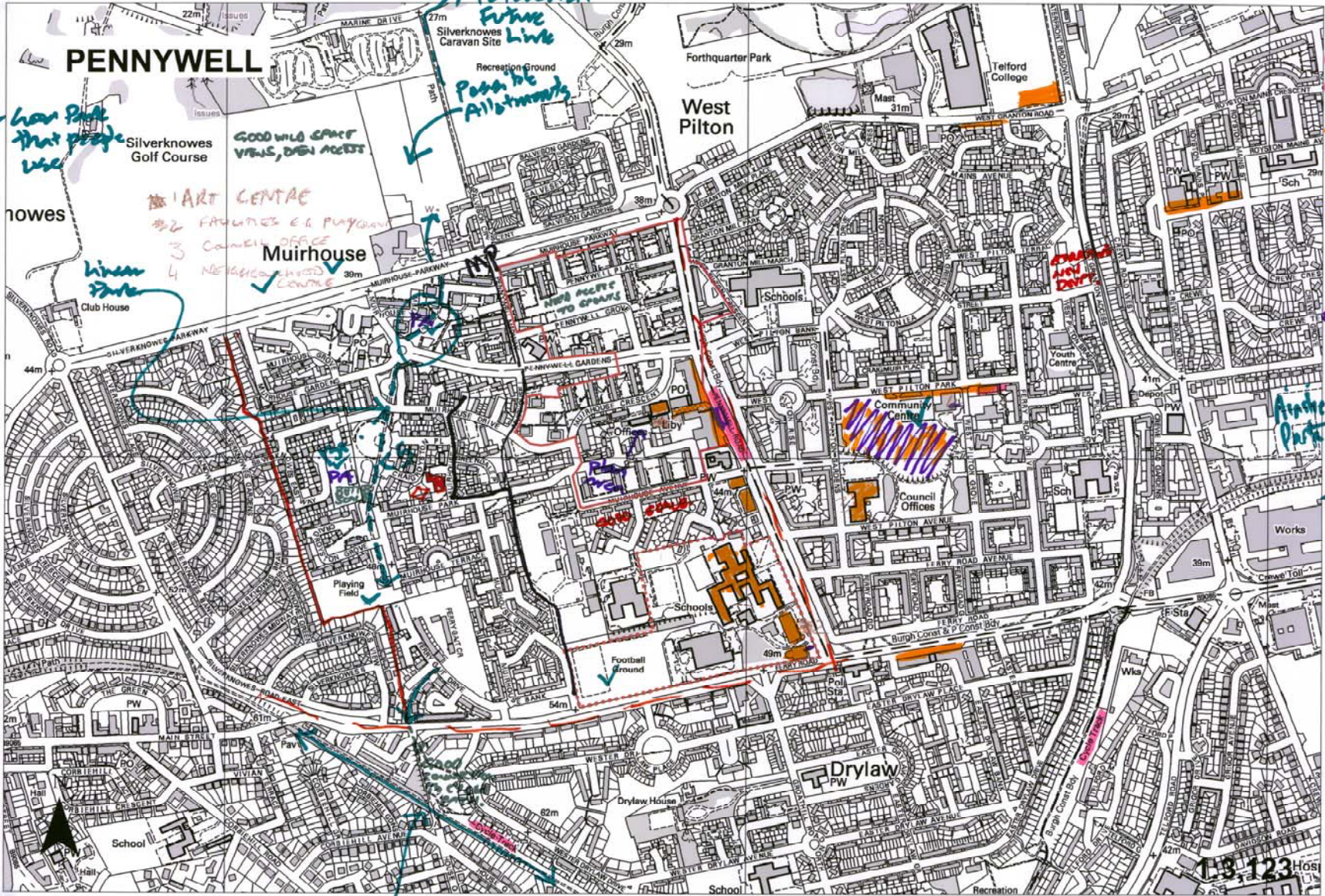
- Access to greenspace
- Active living

Housing

- Quality of housing
- Mix of housing
- Internal environments

Key questions

- What do you think about the neighbourhood you live/work in?
- What would make it better?
- What would you change?



PENNYWELL

✓ Green Park that people use

*Potential Future Link
Possible Allotments*

*ART CENTRE
32 FAMILIES E.G. Pughan
3 COMMUNITY OFFICE
4 NEIGHBOURHOOD COURSE*

*Bus Service
Cycle Paths
Community Transport
Shops Health Leisure*

Somerfield

open space

Millions of people use by residents

Toddler's park

People use cycle track

Reproduced from the Ordnance Survey maps with permission of the Controller of Her Majesty's Stationery Office © Crown Copyright. Unauthorised reproduction infringes Crown Copyright and may lead to prosecution or civil proceedings. Licence Number 100023420. City of Edinburgh Council 2007.

HIA research issues (some)

- Key issues
- Quality and design of housing
- Greenspace
- Public realm
- Amenities
- Access and transport
- Territories/communities and violence; perception of risk
- Integration of old and new communities, young people, families and OP – community development and capacity building
- Aspirations, especially of young people
- Neighbourhood incivilities: graffiti, vandalism, dog-fouling, anti-social behaviour
- Participation/ability to make choices.
- General uncertainty and 'ghost town' effect; social networks during redevelopment
- General feeling of wellbeing
- Employment and employability
- Health issues re mental health, alcohol and drug abuse

HIA research issues (some)

- Key issues
- Quality and design of housing
- Greenspace
- Public realm
- Amenities
- Access and transport
- Territories/communities and violence; perception of risk
- Integration of old and new communities, young people, families and OP – community development and capacity building
- Aspirations, especially of young people
- Neighbourhood incivilities: graffiti, vandalism, dog-fouling, anti-social behaviour
- Participation/ability to make choices.
- General uncertainty and 'ghost town' effect; social networks during redevelopment
- General feeling of wellbeing
- Employment and employability
- Health issues re mental health, alcohol and drug abuse

Pathways



Issue	Pathways	Potential health impacts	Type of impact	Probability	Scale of impact	Affected populations
21 st Century Housing will provide almost 600 new homes.	There are positive mental health outcomes related to improved housing. Good insulation, energy efficiency and central heating can contribute to improvements in physical health	Physical and mental health	Positive	Possible	Low	New residents Residents who move from poorer quality accommodation
	Any increase in interest rates or rents may have a negative impact on residents' ability to pay for their accommodation, and impact on mental health.	Mental health	Negative	Possible	Low	Lower income tenants; mortgage holders

What else?

Stakeholder and residents' interviews

Literature review

Population profile

Recommendations

- Planning Application and Housing Management
- Other Services

CEC and NHS Lothian Public Health should work together to ensure health issues are considered as part of planning approval of matters specified in conditions applications for each site.